



CLUB DE GOLF ROCAS DE SANTO DOMINGO

LAS ROCAS DE SANTO DOMINGO - V REGION - CHILE

SITE REPORT FOLLOWING VISIT IN NOVEMBER 2012

A D A M G O L F D E S I G N
ARQUITECTOS DE CANCHAS DE GOLF

EXISTING VIEW FROM THE TEE BOX - HOLE N°1 - CANCHA ROJA



At present there is a very wide flat bunker, marking the dogleg on this Par 4. On the left in the rough, there is no planting to protect those on the path.

PROPOSED VIEW FROM THE TEE BOX - HOLE N°1 - CANCHA ROJA



In this view, we are proposing to slightly reduce the size of the fairway bunker and to plant some new pine trees in the rough on the left to protect those using the path.

EXISTING VIEW OF THE GREEN AREA - HOLE N°1 - CANCHA ROJA



At present the validity of the first green bunker on the left is questionable. It is 20 meters from the edge of the green and just below a rather large tree. A player hitting in that direction will already have the tree as a hazard. The green bunkers are lateral to the green and the left green bunker at the front only slightly protects the green. There also lacks new planting behind the green to eventually replace the pines that will fall.

PROPOSED VIEW OF THE GREEN AREA - HOLE N°1 - CANCHA ROJA



In this view, we propose to reduce the first green bunker on the left, as it's use has become partially obsolete due to the size of the tree and the tree is already acting as a hazard. Furthermore this bunker is only a hazard for the high handicap player. We are also proposing to increase the size of the first left green bunker to the right. By doing so, it will close off the access to the green a bit more, therefore permitting the placement of strategic pin positions behind. Nevertheless we are proposing to still leave a generous opening to the green for the chip and run shot. We are also proposing to plant some new pine trees behind the green to replace those that will eventually fall.

EXISTING VIEW FROM THE BACK TEE - HOLE N°2 - CANCHA ROJA



At present the fairway bunker is completely out of play, being only 160 meters off the back tee. At best it is only really annoying the high handicap player.

PROPOSED VIEW FROM THE BACK TEE - HOLE N°2 - CANCHA ROJA



In this view, we are proposing to remove the existing fairway bunker and to place two new fairway bunkers. The bunker on the left will be partially between the existing fairway edge and the rough at a distance of 250 meters from the back tee. The bunker on the right will be partially between the existing fairway edge and the rough at a distance of 270 meters from the back tee. The idea is to have two fairway bunkers really in play, that will also help to frame the fairway.

EXISTING VIEW OF THE GREEN AREA - HOLE N°2 - CANCHA ROJA



At present, the right green bunker is nearly totally invisible. Space is available to place features at the back of the green. The green is sloping downhill. It is possible to stop the ball but very difficult in certain circumstances, according to the pin location, length of putt, mowing height and dryness of the green surface. This particular aspect of the green needs to be reviewed in depth.

PROPOSED VIEW OF THE GREEN AREA - HOLE N°2 - CANCHA ROJA



In this view, we are proposing to bring the right green bunker further forward and to remove the ridge that is blocking it's visibility. We are also proposing to place a bunker behind the green up against the slope. As stated before the green, is sloping downhill. It is possible to stop the ball but very difficult in certain circumstances, according to the pin location, length of putt, mowing height and dryness of the green surface. This particular aspect of the green needs to be reviewed in depth.

EXISTING VIEW FROM THE BACK TEE - HOLE N°3 - CANCHA ROJA



At present, seen from the tee, the green bunker seems too elongated. A review of the newly planted trees on the right will need to be done, as in the future they will progressively narrow the landing area.

PROPOSED VIEW FROM THE BACK TEE - HOLE N°3 - CANCHA ROJA



In this view, we are proposing to reduce the size of the existing frontal green bunker and to place a new bunker at the back of the green on the right. In this view we have also removed some bushes on the right side of the first landing area. A review of the newly planted trees on the right will need to be done, as in the future they will progressively narrow the landing area.

EXISTING VIEW FROM THE LANDING AREA - HOLE N°3 - CANCHA ROJA



At present the frontal green bunker is too elongated. The lateral left green bunker is barely visible.

PROPOSED VIEW FROM THE LANDING AREA - HOLE N°3 - CANCHA ROJA



In this view we are proposing to reduce the size of the existing frontal green bunker. We are also proposing to raise the back of the lateral left green bunker to make it more visible by raising the sand line. We are also proposing to place a new bunker on the right at the back of the green, to make this green more strategic and to permit more variable pin placements on this short Par 5.

EXISTING VIEW FROM THE TEES - HOLE N°4 - CANCHA ROJA



At present from the tee complex, there is no strategy, just hit it down the fairway hoping to be long enough to get the opening for the second shot. Furthermore there is an opportunity to see more of the green off the tee, by pruning some branches on a tree in the left rough.

PROPOSED VIEW FROM THE TEES - HOLE N°4 - CANCHA ROJA



In this view, we are proposing to place two new fairway bunkers to give the hole some more strategy off the tee. The left fairway bunker would be placed at 255 meters from the back tee, in the rough near the edge of the fairway. This would help to mark the dogleg and reward positioning off the tee. The right fairway bunker would be placed at 250 meters from the back tee on the edge of the fairway. This bunker helps to close up a little the landing area, and to act as a visual marker. We are also proposing to prune some branches of a tree in the left rough to make the green more visible off the tee.

EXISTING VIEW FROM THE TEES - HOLE N°4 - CANCHA ROJA



OTHER PROPOSED VIEW FROM THE TEES - HOLE N°4 - CANCHA ROJA



In this other view, we are proposing to place one new fairway bunker. The fairway bunker would be placed at 250 meters from the back tee on the edge of the fairway. This bunker helps to close up a little the landing area, and to act as a visual marker.

EXISTING VIEW FROM THE LANDING AREA - HOLE N°4 - CANCHA ROJA



At present the left green bunker is not very visible.

PROPOSED VIEW FROM THE LANDING AREA - HOLE N°4 - CANCHA ROJA



In this view, we are proposing to increase the size of the left green bunker towards the front of the green, to increase it's visibility.

EXISTING VIEW FROM THE LANDING AREA - HOLE N°5 - CANCHA ROJA



At present from 165 yards to the green, which is much higher than the green, the player can see the green complex, with a poor visibility of the right green bunker. From the 100 yard mark, which is lower, the right green bunker becomes invisible. Furthermore, the green hazards are lateral to the green, which doesn't allow for pin positions of various difficulties.

PROPOSED VIEW FROM THE LANDING AREA - HOLE N°5 - CANCHA ROJA



We are proposing to raise the back of the right green bunker to permit the raising of the sand line and that this bunker be moved towards the front of the green. We are also proposing to add a new frontal bunker on the right. By doing so the right side of the green will need a good approach, whilst leaving the possibility to the left for the chip and run shot for the high handicap player. The modifications will enhance the green complex visually and allow for variable pin positions.

EXISTING VIEW FROM THE LANDING AREA - HOLE N°5 - CANCHA ROJA



OTHER PROPOSED VIEW FROM THE LANDING AREA - HOLE N°5 - CANCHA ROJA



We are proposing to raise the back of the right green bunker to permit the raising of the sand line and that this bunker be moved towards the front of the green.

EXISTING VIEW FROM THE TEES - HOLE N°6 - CANCHA ROJA



At present the frontal green bunker on the right is a bit far from the green edge. But more importantly, the visual impact of the future housing project on this picturesque Par 3 shall be immense and some mitigating measures need to be undertaken.

PROPOSED VIEW FROM THE TEES - HOLE N°6 - CANCHA ROJA



In this view, we are proposing to plant mature evergreens at the back of the green near the property line to reduce the visual impact of the housing project. We are also proposing to move the first right green bunker closer to the green edge. Furthermore we are proposing to place a new bunker on the right side of the green in the slope at the back. This will allow for more variable pin positions and the green appearing visually more intimidating on the right.

EXISTING VIEW FROM THE TEES - HOLE N°6 - CANCHA ROJA



OTHER PROPOSED VIEW FROM THE TEES - HOLE N°6 - CANCHA ROJA



In this view, we are proposing to plant mature evergreens at the back of the green near the property line to reduce the visual impact of the housing project. We are also proposing to remove the first right green bunker. We are also proposing to elongate towards the centre of the green, the left green bunker, closing up a little the entrance to the green. Furthermore we are proposing to place a new bunker on the right side of the green in the slope at the back.

EXISTING VIEW LOOKING BACK AT THE TEES - HOLE N°7 - CANCHA ROJA



At present from these tees, the landing area is blind. The landing area becomes visible whilst standing on top of the bench.

PROPOSED VIEW LOOKING BACK AT THE TEES - HOLE N°7 - CANCHA ROJA



In this view, we have raised the level of the tee complex to the top of the previously existing wooden bench, which makes the landing area visible. Making the landing area visible is imperative to permit the development of a meaningful strategy off the tees on this very short Par 5 - 461 yards, 421,5 meters. In actual fact in distance this is a Par 4, Par 5's starting from a distance of 476 yards, 435 meters.

EXISTING VIEW OF THE 1ST LANDING AREA - HOLE N°7 - CANCHA ROJA



At present the ladies tee is extremely far forward as can be seen in this photo on the right. The distance from the ladies tee is 386 yards or 353 meters which is really quite short for a Par 5, even at club level. The positioning of this tee needs to be reviewed. From the tees there is no strategy off the tee, just hit to the left of the fairway! A strategy needs to be developed in order to defend this false Par 5.

PROPOSED VIEW OF THE 1ST LANDING AREA - HOLE N°7 - CANCHA ROJA



In this view, we are proposing to place the ladies tee further back. We are also proposing to place a new fairway bunker placed at the edge of the fairway at a distance of 312 yards or 285 meters from the back tee, to help defend this false Par 5. It will catch any ball hit too far to the right. The design intent of the bunker is that the player loses half a shot.

EXISTING VIEW OF THE LEFT ROUGH AT THE LANDING AREA - HOLE N°7 - CANCHA ROJA



At present the housing bordering this hole is very visible. Some very small trees have been planted to replace some of the trees that were removed, but their size is completely inadequate, and it will take years before any meaningful buffer is created.

PROPOSED VIEW OF THE LEFT ROUGH AT THE LANDING AREA - HOLE N°7 - CANCHA ROJA



In this view we are proposing to plant some much larger evergreen, so that a meaningful buffer is created in a shorter time.

EXISTING VIEW OF THE GREEN AREA - HOLE N°7 - CANCHA ROJA



At present the green is only partially defended by the bunker on the right on this false Par 5. The green defences need to be stronger, to make it more challenging.

PROPOSED VIEW OF THE GREEN AREA - HOLE N°7 - CANCHA ROJA



In this view, we are proposing to place a new bunker at the back of the green on the left using the slope. This will allow for more variable pin positions and the green appearing visually more intimidating on the left. Nevertheless, for the high handicap player, we have left an opening to the green for the chip and run shot. With all these modifications, the hole should play as a Par 4 1/2.

EXISTING VIEW OF THE GREEN AREA - HOLE N°7 - CANCHA ROJA



OTHER PROPOSED VIEW OF THE GREEN AREA - HOLE N°7 - CANCHA ROJA



In this view, we are proposing to place a new bunker at the back of the green on the left using the slope. We are also proposing to place a new bunker at the entrance to the green on the left. This will allow for more variable pin positions and the green appearing visually more intimidating on the left. Nevertheless, for the high handicap player, we have left an opening to the green for the chip and run shot. With all these modifications, the hole should play as a Par 4 1/2.

EXISTING VIEW FROM THE TEES - HOLE N°8 - CANCHA ROJA



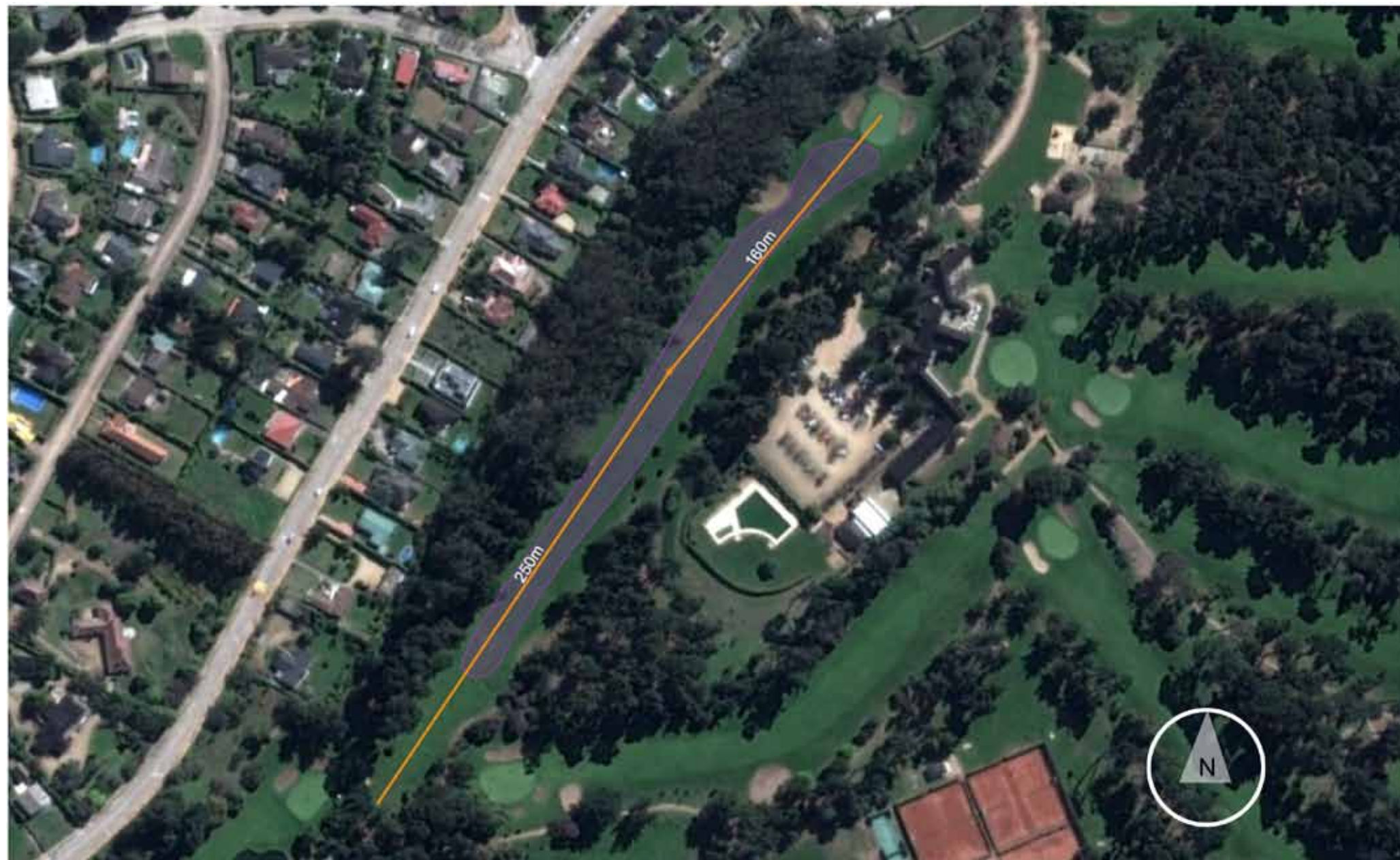
At present on this picturesque hole, the lake is not in play except for the high handicap player. The back bunker is not very visible. Furthermore, the green hazards are lateral to the green, which doesn't allow for pin positions of various difficulties.



PROPOSED VIEW FROM THE TEES - HOLE N°8 - CANCHA ROJA



In this view, we are proposing to raising the sand line of the back bunker by adding some mounding behind the bunker, with the intent to make it much more visible. We are also proposing to modify slightly the shape of the first bunker on the left. We are also proposing to place a new lateral bunker on the right side of the green. Placing a frontal bunker on the left would have blocked the chip and run shot for the high handicap player.

EXISTING PLAN VIEW - HOLE N°9 - CANCHA ROJA

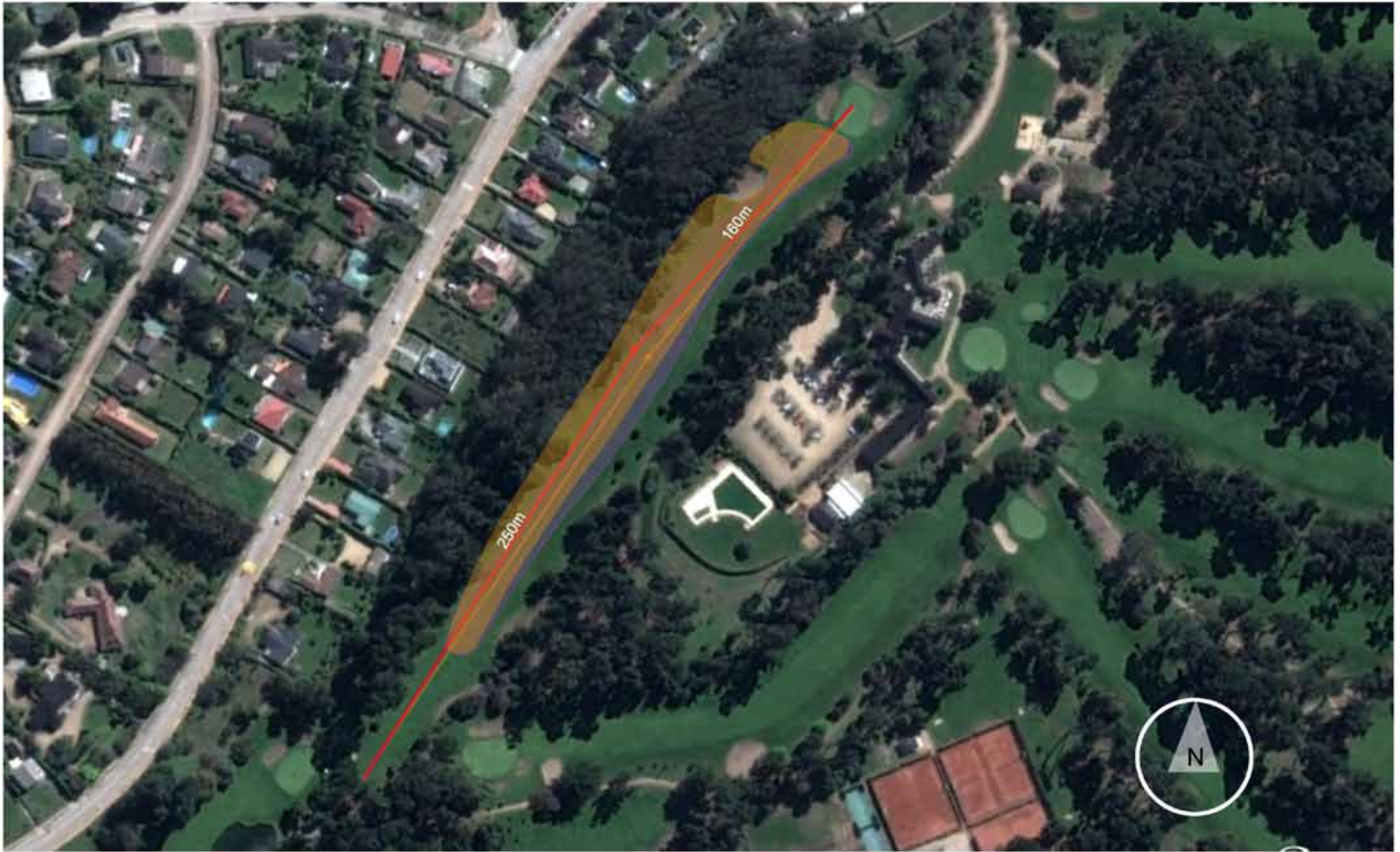





KEY - HOLE 9 ROJA EXISITING	
	Existing fairway position
	Existing Centre line

Plan not to scale

In this view, we are trying to show the present hole layout and the relationship with the swimming pool area.

PROPOSED PLAN VIEW - HOLE N°9 - CANCHA ROJA



KEY - HOLE 9 ROJA - PROPOSED	
	Existing fairway position
	Proposed fairway position
	Existing Centre line
	Proposed Centre line

Plan not to scale

In this view, we are proposing to move the centre line of the hole and to enlarge the fairway and landing area to the left. The intent in modifying the axis of the hole more to the left and to create a slight dog-leg off the tee, is to reduce the possibility of balls landing in the swimming pool area.

EXISTING VIEW FROM THE BACK TEE - HOLE N°9 - CANCHA ROJA



At present from the back tee, there is a safety problem with some players slicing their ball over the trees into the swimming pool area. The area between the boundary line and the left side of the fairway is quite wide, permitting some adjustments.

PROPOSED VIEW FROM THE BACK TEE - HOLE N°9 - CANCHA ROJA



In this view, we are proposing to move the back tee to the right and to lower its height, and to enlarge the fairway and landing area to the left. We are also proposing to plant some pines on the right fairway border. The intent of these modifications is to move the axis of the hole more to the left and to create a slight dog-leg off the tee. These modifications should reduce considerably the safety problem concerning the swimming pool area.

EXISTING VIEW OF THE GREEN AREA - HOLE N°9 - CANCHA ROJA



At present, the fairway bunker which is very large is not in play for the low handicap players, but is bothersome for the high handicap players. The back left green bunker and the right green bunker are barely visible. Moreover the positioning of the bunkers doesn't allow for pin positions of various difficulties.

PROPOSED VIEW OF THE GREEN AREA - HOLE N°9 - CANCHA ROJA



In this view, we are proposing to remove the fairway bunker on the left, as it is not in play for the low handicap player, but rather a nuisance for the high handicap player. We are also proposing to raise the back of the back left green bunker as well as the right green bunker to make them more visible and to raise the sand line. Lastly we are also proposing to elongate the first left green bunker in front of the green to allow for more variable pin positions but still allowing for the run up shot to the green from the right for the high handicap player.

EXISTING VIEW FROM THE BACK TEE - HOLE N°1 - CANCHA BLANCA



At present, from the back tee, the practice is quite visible, especially the people hitting from the grassed area.

PROPOSED VIEW FROM THE BACK TEE - HOLE N°1 - CANCHA BLANCA



In this view, we are proposing to plant some bushes or low lying trees to mask the view onto the practice.

EXISTING VIEW OF THE GREEN AREA - HOLE N°1 - CANCHA BLANCA



At present the green itself has a very strong down slope as can be seen from the above photo. It is possible to stop the ball but very difficult in certain circumstances, according to the pin location, length of putt, mowing height and dryness of the green surface. This particular aspect of the green needs to be reviewed in depth. Space is available to place features at the back of the green.

PROPOSED VIEW OF THE GREEN AREA - HOLE N°1 - CANCHA BLANCA



In this view, we are proposing to elongate very slightly the right green bunker to permit more variable pin positions, if this green is kept as is. It is our view that the steepness of the slope on this green is such that the green needs to be rebuilt, to make it more playable and a thorough review needs to be undertaken. Upon that review a new green concept could be drawn up as shown in the photo. In the photomontage we are using the same green location, but have reduced the slope and placed a new bunker on the left at the back of the green, into the slope to make the hole more strategic and visually striking.

EXISTING VIEW FROM THE BACK TEE - HOLE N°2 - CANCHA BLANCA



At present the fairway bunker and left green bunker are visible, but the bunkers are very flat and need to be a bit more aggressive.

PROPOSED VIEW FROM THE BACK TEE - HOLE N°2 - CANCHA BLANCA



In this view, we are proposing to mound the back perimeters of the fairway bunker and the left green bunker so that they have more of a lip, are more difficult to play out of and are even more visible.

EXISTING VIEW FROM THE LANDING AREA - HOLE N°2 - CANCHA BLANCA



At present the fairway bunker, and the green bunkers are very flat and the right green bunker is barely visible. Visually the green complex looks very flat and not very intriguing.

PROPOSED VIEW FROM THE LANDING AREA - HOLE N°2 - CANCHA BLANCA



In this view, we are proposing to mound the back perimeters of the fairway bunker and the left green bunker so that they have more of a lip, are more difficult to play out of and are even more visible. Concerning the right green bunker we are proposing that it be elongated towards the front of the green to permit more variable pin positions and to have more mounding in the back to make it more visible and to raise the sand line.

EXISTING PLAN - HOLE N°2 - CANCHA BLANCA



KEY - HOLE 2 BLANCA - EXISITNG

Plan not to scale

POTENTIAL PROPOSED PLAN - HOLE N°2 - CANCHA BLANCA



Plan not to scale

In this potential plan view, it tries to show the possibility of extending the hole by moving the green complex. This is just an idea, and should only be considered after all the important renovation works have been undertaken.

EXISTING VIEW FROM THE TEES - HOLE N°3 - CANCHA BLANCA



At present, the tee complex is much too small for a Par 3, as during the autumn and winter it is prone to severe divoting.

PROPOSED VIEW FROM THE TEES - HOLE N°3 - CANCHA BLANCA



In this view, we are proposing to extend the existing tee complex to the left to make it larger. It will also help in the presentation of the hole, as the player will see more of the green complex.

EXISTING VIEW FROM THE MEN'S TEE - HOLE N°3 - CANCHA BLANCA



At present, the right green bunker is not very visible, is too elongated to the right and needs to be pivoted closer to the green edge. The shaping of the mounding at the back of the green integrating the green bunker needs to be reviewed, in order to have more movement and to be more picturesque. This Par 3 has no frontal defences which doesn't allow for pin positions of various difficulties.

PROPOSED VIEW FROM THE MEN'S TEE - HOLE N°3 - CANCHA BLANCA



In this view, we are proposing to reduce the size of the right green bunker. We are also modifying the shape of the back bunker to give it more movement. Finally we are also proposing to place a frontal bunker on the left which will permit more variable pin positions.

EXISTING VIEW FROM THE TEES - HOLE N°4 - CANCHA BLANCA



At present from the tees, the right fairway bunker placed at 266 yards or 243 meters is not visible. The left fairway bunker placed at 295 yards or 270 meters is not visible from the white tees and not penal enough on this very short Par 5 of 483 yards or 441 meters. This false Par 5 needs to defend itself! The planting in the rough on both sides of this hole need to be reviewed, as in time the fairway will appear narrower and narrower from the tees.

PROPOSED VIEW FROM THE TEES - HOLE N°4 - CANCHA BLANCA



In this view, we are proposing to increase the lip of the left fairway bunker to help make it more visible especially from the white tees, but also to make the bunker more penal, so that the player loses half a shot on this very short Par 5 of 483 yards or 441 meters. We are also proposing to move back the right fairway bunker to a distance of 300 yards or 274 meters, so that it is visible from the tees and much more in play for the low handicap player.

EXISTING VIEW OF THE GREEN AREA - HOLE N°4 - CANCHA BLANCA



The green bunkers are rather flat and the back green bunker is barely visible. More importantly this green complex on this very short Par 5 has no defences, permitting pin positions of various difficulties. Behind the green there is a lot of space which can allow for the planting of coniferous trees to hide some of the urbanisation in the background.

PROPOSED VIEW OF THE GREEN AREA - HOLE N°4 - CANCHA BLANCA



In this view we are proposing to raise the back of the back green bunker to make it visible and to give the green a better visual backdrop. Furthermore we are proposing to place a green bunker on the left. All these added features should help to defend the green on this very short Par 5 and permit more variable pin positions.

EXISTING VIEW FROM THE BACK TEE - HOLE N°5 - CANCHA BLANCA



At present the green complex is completely visible only from the 150 yards or 137 meters mark and only partially visible from the 200 yards or 183 meters mark. This means that any player not reaching the 200 yards mark has a blind shot with a very difficult green bordered by water on the left. Moreover some branches in the left rough are partially hiding part of the landing area.

PROPOSED VIEW FROM THE BACK TEE - HOLE N°5 - CANCHA BLANCA



In this view we are proposing to move forward the white and red tees, so that the vast majority of high handicap players reach at a minimum the 200 yards or 183 meters mark, if not the 150 yards or 137 meters mark. These modifications have to be checked out in the field, but it means roughly that both tees will be moved forward approximately 25 yards or 23 meters. These modification will ensure that the second shot isn't blind allowing for the amelioration of the green complex design, and increased player satisfaction. We are also proposing to prune some branches off some trees in the left rough, helping to see more of the landing area.

EXISTING VIEW FROM THE 150 YARDS MARKER - HOLE N°5 - CANCHA BLANCA



At present this green complex is quite difficult and tricky. There is a hump at 80 yards or 73 meters from the green that is partially blocking the view of the lake. The left part of the green complex is quite penal, with nothing stopping the ball from rolling into the water. But there are no green features permitting pin positions of various difficulties. The tree stumps to the right of the green need to be removed.

PROPOSED VIEW FROM THE 150 YARDS MARKER - HOLE N°5 - CANCHA BLANCA



In this view, we are proposing to remove the hump at 80 yards or 73 meters from the green that is partially blocking the view of the lake. We are also proposing to place a green bunker in the slope between the water's edge and the green, to catch balls that would otherwise have gone into the lake. We are also proposing to place a new bunker on the right to permit pin positions of various difficulties. We are also removing the tree stumps in the rough at the right of the green.

EXISTING VIEW FROM THE TEES - HOLE N°6 - CANCHA BLANCA



At present the right fairway bunker is barely visible. The left fairway bunker is visible but exceptionally flat and its view is blocked by the tree on the fairway. The presentation of the hole is quite perturbed by the placement of this tree and it is questionable whether it should be conserved. Another option could be to place the tees further to the right.

PROPOSED VIEW FROM THE TEES - HOLE N°6 - CANCHA BLANCA



In this view, we are proposing to raise the back of the right and left fairway bunkers to make them much more visible and penal and to raise their sand lines.

EXISTING VIEW FROM THE TEES - HOLE N°6 - CANCHA BLANCA



OTHER PROPOSED VIEW FROM THE TEES - HOLE N°6 - CANCHA BLANCA



In this other proposed view, it tries to show how the hole might look with the proposed modifications including the removal of the tree on the left side of the fairway. This option obviously enlarges visually the landing area.

EXISTING VIEW FROM THE 150 YARDS MARKER - HOLE N°6 - CANCHA BLANCA



At present from the 150 yards marker the water line of the lake is not fully visible. The back green bunker lacks a bit of movement and looks rather flat.

PROPOSED VIEW FROM THE 150 YARDS MARKER - HOLE N°6 - CANCHA BLANCA



In this view, we are proposing to dig a swale in the direction of the newly planted tree, to make the water line of the lake much more visible. We are also proposing to raise the sand line of the back green bunker by using the existing slope, to give the bunker more movement. We are also slightly enlarging the left green bunker.

EXISTING VIEW FROM THE 150 YARDS MARKER - HOLE N°6 - CANCHA BLANCA



OTHER PROPOSED VIEW FROM THE 150 YARDS MARKER - HOLE N°6 - CANCHA BLANCA



In this other proposed view, it tries to show how the hole might look with the proposed modifications including the placement of a new bunker in the slope between the green and the lake edge. The idea behind this option is that this green is quite difficult to approach and quite a few balls will either run or quick off into the lake. By placing a bunker here it should catch balls that would otherwise have gone into the lake.

EXISTING PLAN VIEW - HOLE N°6 - CANCHA BLANCA





KEY - HOLE 6 BLANCA EXISTING

Plan not to scale

POSSIBLE PROPOSAL PLAN VIEW - HOLE N°6 - CANCHA BLANCA



KEY - HOLE 6 BLANCA PROPOSED	
	Proposed new fairway position
	Proposed tree planting
	Proposed fairway bunker

Plan not to scale.

In this plan view, it tries to show how the hole might look with an alternate routing of the hole. One could also envisage extending slightly the lake edge, so that players are playing their second shot over water. This is just an idea, and should only be considered after all the important renovation works have been undertaken.

EXISTING VIEW FROM THE TEES - HOLE N°7 - CANCHA BLANCA



PROPOSED VIEW FROM THE TEES - HOLE N°7 - CANCHA BLANCA



In this proposed view, it tries to show how the hole might look with the proposed modifications including the removal of the tree on the left in the rough which is blocking the view of the green complex from the tees.

EXISTING VIEW OF THE GREEN AREA - HOLE N°7 - CANCHA BLANCA



At present the bunkers are too flat and as such have very little strategic value. The back left bunker is invisible. Furthermore they are placed quite far from the green and laterally, which doesn't permit variable pin positions. This hole has quite a lot of space behind the green, which could permit the lengthening of the hole. This may be looked at in more detail during a next visit.

PROPOSED VIEW OF THE GREEN AREA - HOLE N°7 - CANCHA BLANCA



In this view, we are proposing to elongate and enlarge the first left green bunker towards the entrance of the green. We also propose to raise the lip of the first left green bunker to make it more visible and challenging. We are also proposing to raise the back of the back green bunker to make it visible and to raise the sand line. Lastly, we are also proposing to remove a ridge that is partially hiding the right green bunker, to enlarge it and to raise its sand line to make it more visible.

EXISTING VIEW OF THE AREA FOR A PROPOSED TEE - HOLE N°8 - CANCHA BLANCA



At present there is a great opportunity to build an extra tee box, on the raised area behind the existing back tee.

PROPOSED VIEW OF THE AREA FOR A NEW TEE - HOLE N°8 - CANCHA BLANCA



In this view, we are proposing to build an extra tee box, on the raised area behind the existing back tee. This modification will lengthen the hole by 22 yards or 20 meters.

EXISTING VIEW FROM THE PROPOSED TEE - HOLE N°8 - CANCHA BLANCA



At present the frontal green bunker isn't really in play. The first third of the green is sloping down quite significantly not allowing for a reasonable pin position. The bunkers close to the green are lateral so not permitting various variable pin positions.

PROPOSED VIEW FROM THE PROPOSED TEE - HOLE N°8 - CANCHA BLANCA



In this view, we are proposing to remove the frontal green bunker. We are also proposing to elongate both lateral green bunkers to close up a little the entrance to the green, whilst still allowing for the chip and run shot. We are also proposing to raise the sand line of the left green bunker to give it a bit more movement. We are also proposing to lessen the slope of the green at its front, to permit the placement of pins.

EXISTING PLAN VIEW - HOLE N°9 - CANCHA BLANCA



KEY - HOLE 9 BLANCA - EXISTING

- Existing fairway
- Existing centre line

Plan not to scale

PROPOSED PLAN VIEW - HOLE N°9 - CANCHA BLANCA



In this proposed plan view, we are proposing that the axis of the hole be slightly moved to the left, to create a bigger buffer area between the fairway and the tees of the proposed practice area.

EXISTING VIEW OF THE GREEN AREA - HOLE N°9 - CANCHA BLANCA



At present the green is sloping downhill. It is possible to stop the ball but very difficult in certain circumstances, according to the pin location, length of putt, mowing height and dryness of the green surface. This particular aspect of the green needs to be reviewed in depth. Furthermore the bunkers are lateral to the green therefore leaving no possibilities for strategic pin placements.

PROPOSED VIEW OF THE GREEN AREA - HOLE N°9 - CANCHA BLANCA



In this view, we are proposing to lessen the slope of the green, particularly at its front, to permit the placement of pins. We are also proposing to modify the shape of the right green bunker so that there is more space to exit the green towards the path. To permit the placement of some more strategic pin placements we are also proposing to place a new frontal bunker to the left.

EXISTING VIEW OF THE BACK TEE - HOLE N°1 - CANCHA AZUL



At present there is a possibility of extending the back tee towards the terrace.

PROPOSED VIEW OF THE BACK TEE - HOLE N°1 - CANCHA AZUL



In this view, we are proposing to show what the extension of the back tee might look like. It is just an option to consider.

EXISTING VIEW FROM THE LANDING AREA - HOLE N°1 - CANCHA AZUL



At present from the landing area, the first green bunker on the right is barely visible. Moreover it is not in play for the low handicap player. The green is sloping downhill. It is possible to stop the ball but very difficult in certain circumstances, according to the pin location, length of putt, mowing height and dryness of the green surface. This particular aspect of the green needs to be reviewed in depth. Furthermore the bunkers are lateral to the green therefore leaving no possibilities for strategic pin placements.

PROPOSED VIEW FROM THE LANDING AREA - HOLE N°1 - CANCHA AZUL



In this view, we are proposing to remove the first green bunker on the right that is not really in play for the low handicap player. We are also proposing to elongate the right green bunker towards the front of the green, to close up the green a little. To permit the placement of some more strategic pin placements we are also proposing to place a new frontal bunker to the left. We are also proposing to place a new bunker at the back of the green on the right. Finally we are also proposing to plant some new pine trees behind the green to replace those that will eventually fall. All these modifications should help to make the hole more challenging, strategic and visually appealing.

EXISTING VIEW FROM THE TEES - HOLE N°2 - CANCHA AZUL



At present the fairway bunker is much too elongated away from the line of play. The furthest part to the right, is not in play for the low handicap player, and only frustrates high handicap players on this very short Par 5 of 491 yards or 449 meters. It is also not very visually appealing.

PROPOSED VIEW FROM THE TEES - HOLE N°2 - CANCHA AZUL



In this view, we are proposing to reduce the size of the fairway bunker by removing the right part which isn't really in play.

EXISTING VIEW FROM AFTER THE 1st LANDING AREA - HOLE N°2 - CANCHA AZUL



At present some new purple beech trees have been planted both to the left and right of the fairway. Already the trees on the left are encroaching on the visibility of the green complex and hiding the bunkers. In the future half the green shall be hidden. The trees on the right, will also grow and in due course narrow substantially the fairway width. This view shows how imperative it is, that the golf course committee, have the landscape architect working with a qualified golf course architect. The planting and reforestation program will and is substantially changing the vegetative characteristics of the course and their implications and impact need to be fully understood by the committee. Most notably concerning playability, maintenance, shade, leaf management and the progressive change from a coniferous woodland to a deciduous woodland.

VIEW FROM AFTER THE 1ST LANDING AREA IN A FEW YEARS - HOLE N°2 - CANCHA AZUL



In this view, we are proposing to show the growth of the purple beech trees several years later, and their visual impact. We reiterate the need to have the landscape architect working with a qualified golf course architect. We reiterate that the planting and reforestation program will and is substantially changing the vegetative characteristics of the course and their implications and impact need to be fully understood by the committee. Most notably concerning playability, maintenance, shade, leaf management and the progressive change from a coniferous woodland to a deciduous woodland. The reforestation program needs to be established with a qualified golf course architect working in conjunction with a forestry expert, who has experience in the regeneration of this type of woodland in this region with the same climatic and soil conditions and the landscape architect working on the ornamental planting scheme.

EXISTING VIEW OF THE GREEN AREA - HOLE N°2 - CANCHA AZUL



At present the green is quite flat and presents no particular difficulty on this very short Par 5. The right green bunker is rather flat, needs better definition and is too elongated towards the right. As previously stated, the left green bunkers are mostly hidden by the newly planted purple beach trees. There is space at the back of the green to potentially place some new features.

PROPOSED VIEW OF THE GREEN AREA - HOLE N°2 - CANCHA AZUL



In this view, we are proposing to remove the ridge before the right green bunker and modifying the bunker to make it much more visible. We are also proposing to place a new bunker at the back of the green in the new proposed mounding. Lastly we are proposing to remove the newly planted beech trees on the left side of the fairway. All these modifications should help to make the hole more challenging, strategic and visually appealing.

EXISTING VIEW FROM THE TEES - HOLE N°3 - CANCHA AZUL



At present from the tees, the fairway bunker on the right edge of the fairway is not visible. This short Par 4 of 363 yards or 332 meters, also lacks any strategy off the tee.

PROPOSED VIEW FROM THE TEES - HOLE N°3 - CANCHA AZUL



In this view, we are proposing to remove the invisible fairway bunker of the right side of the fairway. We are also proposing to place a new fairway bunker on the left side of the fairway at a distance of 301 yards or 275 meters from the back tee, to make the hole more strategic for the low handicap player. Finally we are also proposing to plant some new pine trees in the rough on the left to replace those that will eventually fall.

EXISTING VIEW OF THE GREEN AREA - HOLE N°3 - CANCHA AZUL



At present from the landing area, the back green bunker on the right is not visible. There is ample room at the back of the green to raise the back of the bunker to make it visible.

PROPOSED VIEW OF THE GREEN AREA - HOLE N°3 - CANCHA AZUL



In this view, we have removed the existing fairway bunker on the right. We are also proposing to raise the back of the right green bunker to make it visible and to elongate it towards the front of the green, to also improve its visibility and strategic value.

EXISTING VIEW FROM THE TEES - HOLE N°4 - CANCHA AZUL



At present this hole is a difficult uphill Par 3 of 217 yards or 198 meters. The green is sloping downhill. It is possible to stop the ball but very difficult in certain circumstances, according to the pin location, length of putt, mowing height and dryness of the green surface. This particular aspect of the green needs to be reviewed in depth. Furthermore the bunker is lateral to the green therefore leaving no possibilities for strategic pin placements. Lastly, the positions of the tees need to be reviewed, especially the ladies tee, as the average lady is hitting with a driver.

PROPOSED VIEW FROM THE TEES - HOLE N°4 - CANCHA AZUL



In this view, we are proposing to elongate the left green bunker. We are also proposing to place a new bunker at the back of the green on the right into the slope. We are also proposing a frontal bunker on the right to permit more variable pin positions. It is our view that the steepness of the slope on this green is such that the green needs to be rebuilt, to make it more playable and a thorough review needs to be undertaken. Upon that review a new green concept could be drawn up as shown in the photo. In the photomontage we are using the same green location but have reduced the slope with the objective to make the hole more strategic and visually striking.

EXISTING VIEW OF THE HOUSING ON THE LEFT - HOLE N°5 - CANCHA AZUL



At present the housing bordering this hole on the left is very visible. Some very small trees have been planted to replace some of the trees that were removed, but their size is completely inadequate, and it will take years before any meaningful buffer is created.

PROPOSED VIEW OF THE HOUSING ON THE LEFT - HOLE N°5 - CANCHA AZUL



In this view we are proposing to plant some much larger evergreen, so that a meaningful buffer is created in a shorter time.

EXISTING VIEW OF THE GREEN AREA - HOLE N°5 - CANCHA AZUL



At present the left green bunker is only very partially visible.

PROPOSED VIEW OF THE GREEN AREA - HOLE N°5 - CANCHA AZUL



In this view we are proposing to raise the sand line of the existing left green bunker to make it much more visible. We are also proposing to place a new bunker on the right. These modifications should help to make the hole more visually striking.

EXISTING VIEW FROM THE BACK TEE - HOLE N°6 - CANCHA AZUL



At present, from the back tee, it would be beneficial to see more of the landing area. Furthermore the tee box needs to be reorientated down the axis of the hole.

PROPOSED VIEW FROM THE BACK TEE - HOLE N°6 - CANCHA AZUL



In this view we are proposing to raise the back tees to make the landing area more visible and to realign the tee down the centre line of the hole.

EXISTING VIEW OF THE GREEN AREA - HOLE N°6 - CANCHA AZUL



At present the green lacks a visual backdrop helping players to judge correctly the distance to the pin.

PROPOSED VIEW OF THE GREEN AREA - HOLE N°6 - CANCHA AZUL



In this view we are proposing to place a new bunker on the right into the existing mounding at the back of the green. This will give a visual backdrop to the green, but also make the right part of the green much more challenging and permit more variable pin placements.

EXISTING VIEW FROM THE LANDING AREA - HOLE N°7 - CANCHA AZUL



At present, the green complex is a little visually bland and the housing in the axis of the hole is omnipresent.

PROPOSED VIEW FROM THE LANDING AREA - HOLE N°7 - CANCHA AZUL



In this view we are proposing to redesign the existing right green bunker to make it visually more dynamic and to elongate it slightly to the front of the green. We are also proposing to place a new green bunker in the slope to the left of the green. This will help in the visual composition of the green. Furthermore we are proposing that some new pine planting be established behind the green where there is ample space, to mask the visual omnipresence of the housing.

EXISTING VIEW OF THE GREEN AREA - HOLE N°9 - CANCHA AZUL



At present, the green surface is very small. Both green bunkers are invisible from the landing area. There is quite a lot of space available behind the green.

PROPOSED VIEW OF THE GREEN AREA - HOLE N°9 - CANCHA AZUL



In this view we are proposing to raise the back of both green bunkers, to make them visible and to elongate the one on the right towards the front of the green. We are also proposing to place a new frontal bunker on the right close to the green edge. This will make the right side of the green more challenging and permit more variable pin positions.

EXISTING VIEW OF THE GREEN AREA - HOLE N°9 - CANCHA AZUL

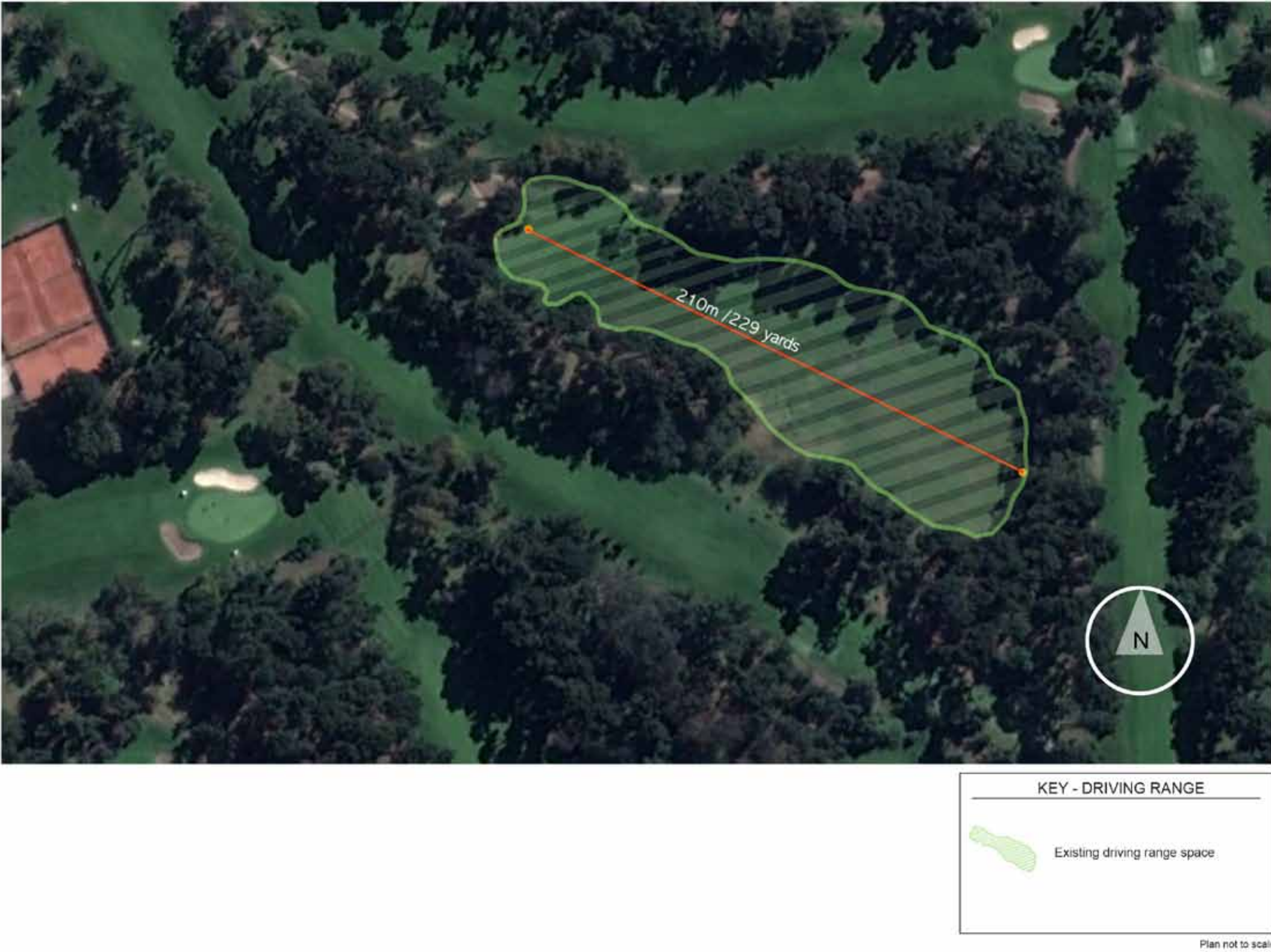


OTHER PROPOSED VIEW OF THE GREEN AREA - HOLE N°9 - CANCHA AZUL



In this view we are proposing to raise the back of both green bunkers, to make them visible and to elongate the one on the right towards the front of the green.

EXISTING PLAN OF THE PRACTICE AREA - PRACTICE AREA



At present, the length of the practice range is only 210 meters or 229 yards. As a result quite a few balls are going through the netting at the back of the green. But more importantly, due to its length, many players are not using woods on the practice range.

PROPOSED PLAN OF THE PRACTICE AREA - PRACTICE AREA



In this view we are proposing to extend the practice area to 250 meters or 273 yards. Obviously this new proposed length will not enable all category of players to play their woods, but it will nevertheless allow the vast majority of the members and visitors to do so. This proposal will necessitate the displacement of the existing small building to the right of the practice. We envisage that with this proposal the number of practice booths will be slightly more than the existing. This proposed plan will need to be staked out in the field for verification as the shading of the aerial photograph can be quite deceiving.

EXISTING VIEW FROM BEHIND THE PRACTICE AREA - PRACTICE AREA



PROPOSED VIEW FROM BEHIND THE PRACTICE AREA - PRACTICE AREA



In this view we are trying to show how the practice might look like from the new practice tees.