



SPORT FRANCES CLUB DE GOLF

VITACURA - SANTIAGO DE CHILE - CHILE

SITE REPORT FOLLOWING VISIT IN MARCH 2015
under copyright of:



EXISTING AERIAL VIEW - HOLE N°1 - PAR 4 - 392/365/351 YARDS - HCP 13



This aerial view shows the hole in its present layout. One can see that the fairway starts just after the tees. The left green bunker is turning away from the edge of the green and the two right bunkers are partially in the shade. Moreover it is quite visible that the right side of the fairway is partially in the shade, necessitating a particular kind of maintenance to avoid excess moisture on the fairways, particularly nearer to the green.

PROPOSED PLAN VIEW - HOLE N°1 - PAR 4 - 392/365/351 YARDS - HCP 13



This aerial view shows the hole with the proposed modifications. At present the fairway starts at the tee so the green line shows a possible delimitation of the fairway, with the fairway starting at 145 yards from the back tee. At present the fairway edge is cut rather straight, so the intent of the movement of the green line is to give an example of how the fairway could be cut. The existing left green bunker has been enlarged and turned towards the green. The front right green bunker has been extended to permit more pin placements and to narrow the entrance to the green. The back right green bunker has been reduced as part of it is under trees.

EXISTING VIEW FROM THE TEE - HOLE N°1 - PAR 4 - 392/365/351 YARDS - HCP 13



At present there is no strategy off this tee but it allows all level of players to get started with a comfortable tee shot. The tees are of a good size allowing for their ease of maintenance. Off the tee the left hand green bunker is not visible and the first green bunker right looks slightly out of play. As on all the holes the fairway is starting right after the tee, and the edges of the tee are being maintained as fairway. This doesn't allow for a clear definition of the fairway, means a lot more area needs to be mowed as fairway and increases the need for fairway irrigation.

PROPOSED VIEW FROM THE TEE - HOLE N°1 - PAR 4 - 392/365/351 YARDS - HCP 13



We propose not to place any fairway bunkers on this hole to allow all levels of players to get off to a good start. We are also proposing to start the fairway 145 yards from the men's tee and to have that area maintained as rough. This will give better visual definition to the fairway and minimize maintenance and irrigation. We also propose to make the left green bunker visible from the tee and to have the front right green bunker more in play and visible as seen from the tee.

EXISTING VIEW FROM THE LANDING AREA TOWARDS THE GREEN - HOLE N°1



At present the left green bunker is barely visible and therefore proposes little strategic value. The front green bunker on the right due to its positioning and form isn't proposing much strategic value. The back green bunker on the right is partly blind due to the vegetation and is a bit far from the edge of the green. This may also be due to the green becoming smaller over the years due to bermuda grass encroachment. A newly planted tree on the right before the first green bunker will eventually render the right green side bunkers blind when fully grown. The mounding at the back of the green has very little movement and creates a bowl shape vision of the green. Due to the configuration of the bunkers which are lateral to the green, pin locations are much the same, affording no variety of difficulty in pin positions.

PROPOSED VIEW FROM THE LANDING AREA TOWARDS THE GREEN - HOLE N°1



We propose to make the left green bunker much more visible by raising the sand line and extending the bunker into the mound at the back of the green. We are also proposing to extend in front of the green the front right green bunker, narrowing a little, the entrance to the green. This should permit more challenging pin positions on the right of the green and make it more visually appealing. We are also proposing to bring more into play the back right green bunker, by making it more visible and closer to the edge of the green. (This may also be done by extension of the green to its previous limit. To be seen in the field.) We are also proposing to reduce its size as part of it, is under a tree. Finally we are also proposing to break up a little the mounding at the back of the green, to break its bowl like appearance and to make the green complex a little bit more visually appealing.

EXISTING VIEW OF THE GREEN AREA - HOLE N°1 - PAR 4 - 392/365/351 YARDS - HCP 13



This image shows the existing green complex in more detail. The left green bunker is turning away from the green. The front right bunker has little strategic value, and part of the back right green bunker is under a tree. Moreover the bunkers are quite distant from the green. This may also be due to the green becoming smaller over the years due to bermuda grass encroachment. The entrance to the green is quite large. The type of mounding around the back of the green is accentuating the bowl like effect. The configuration of the green complex doesn't allow for a variety of pin placements with different difficulties.

PROPOSED VIEW OF THE GREEN AREA - HOLE N°1 - PAR 4 - 392/365/351 YARDS - HCP 13



In this view we can more clearly see our proposals to make the left green bunker much more visible by raising the sand line and extending the bunker into the mound at the back of the green. We can also see our proposed extension of the front right green bunker in front of the green, closing up a little the entrance to the green. We can also see our proposal to bring more into play the back right green bunker, by making it more visible, reducing its size and bringing it closer to the edge of the green. (This may also be done by extension of the green to its previous limit. To be seen in the field.) Finally we can also see our proposal to break up a little the mounding at the back of the green to make the green complex a little bit more visually appealing. These modifications will allow for more varied pin placements.

EXISTING VIEW FROM THE BACK TEE - HOLE N°2 - PAR 4 - 371/350/330 YARDS - HCP 3



At present the back and men's tee is playing down into the ground with the ladies tee in front playing from a higher platform. This really makes for an awkward feeling off the tee. It's preferable for the back tee to be off the ground and the highest in elevation on the axis of play.

PROPOSED VIEW FROM THE BACK TEE - HOLE N°2 - PAR 4 - 371/350/330 YARDS - HCP 3



We propose to elevate the back and men's tees, so that it's off the ground and higher in elevation than the ladies tee, to avoid the uncomfortable feeling of hitting into the ladies tee.

EXISTING VIEW OF THE BACK TEE - HOLE N°2 - PAR 4 - 371/350/330 YARDS - HCP 3



As can be seen, the white ball markers are nearly at ground level with the ground sloping up towards the hole off the tee. Not a very comfortable tee shot.

PROPOSED VIEW OF THE BACK TEE - HOLE N°2 - PAR 4 - 371/350/330 YARDS - HCP 3



We propose to elevate the back and men's tees, so that it's off the ground, higher in elevation than the ladies tee, to make for a more comfortable tee shot on this uphill fairway.

EXISTING AERIAL VIEW - HOLE N°2 - PAR 4 - 371/350/330 YARDS - HCP 3



At present, the front part of the green complex is sloping severely down, making it such that at least a third of this green of 385 m² cannot be used. Moreover one cannot see where the left edge and back of the green finishes on this perched green. Part of the left green bunker is quite far from the green making this shot particularly difficult for the average player. From the right green bunker it is difficult to see the putting surface.

PROPOSED PLAN VIEW - HOLE N°2 - PAR 4 - 371/350/330 YARDS - HCP 3



We are proposing to modify the contouring and location of the green. The green will be pushed back and enlarged to a surface of approximately 450 m² as can be seen with the green line. The green surface will in essence be fixed at 74.50, with the first part of the green sloping very slightly down towards the middle of the green and the back and left side rising very slightly into the slope of the land. This will ensure that the left edge and back of the green are visible from the landing area and from below the green. As we are moving back the green, we are also proposing to reduce the size of the left green bunker and move the right green bunker closer to the proposed edge of the green and raising its base level so that the green surface is visible when playing your shot.

EXISTING VIEW OF THE GREEN AREA - HOLE N°2 - PAR 4 - 371/350/330 YARDS - HCP 3



In this existing view of the green complex one can clearly see the first third of the green severely sloping down, making it unusable. Moreover the left and back limit of the green is not very visible on this difficult perched green. One can also see that part of the left green bunker is quite distant from the green and that the level of the right green bunker is such that playing from it, one cannot see the green surface.

PROPOSED VIEW OF THE GREEN AREA - HOLE N°2 - PAR 4 - 371/350/330 YARDS - HCP 3



We are proposing to push back the green and to enlarge it to approximately 450 m² by better using the existing ridge of the green complex. The green complex would be in essence set as a plateau at 74.50, with the first part of the green slightly sloping towards the center and the left and back of the green rising slightly into the existing slope to make the left and back edge of the green visible from the landing area and from below the green. We are also proposing to reduce the size of the left green bunker and to move closer to the edge of the proposed green the right green bunker and to raise its level so that the green surface will be visible when playing from it.

EXISTING VIEW FROM THE BACK OF THE GREEN - HOLE N°2 - PAR 4 - 371/350/330 YARDS - HCP 3



This view shows the existing green from the back. It is quite visible where the break and fall off of the green occurs, showing little green to work with. Moreover this view shows quite well the available flat area to the left, right and back of the green which can be used to enlarge the green.

PROPOSED VIEW FROM THE BACK OF THE GREEN - HOLE N°2 - PAR 4 - 371/350/330 YARDS - HCP 3



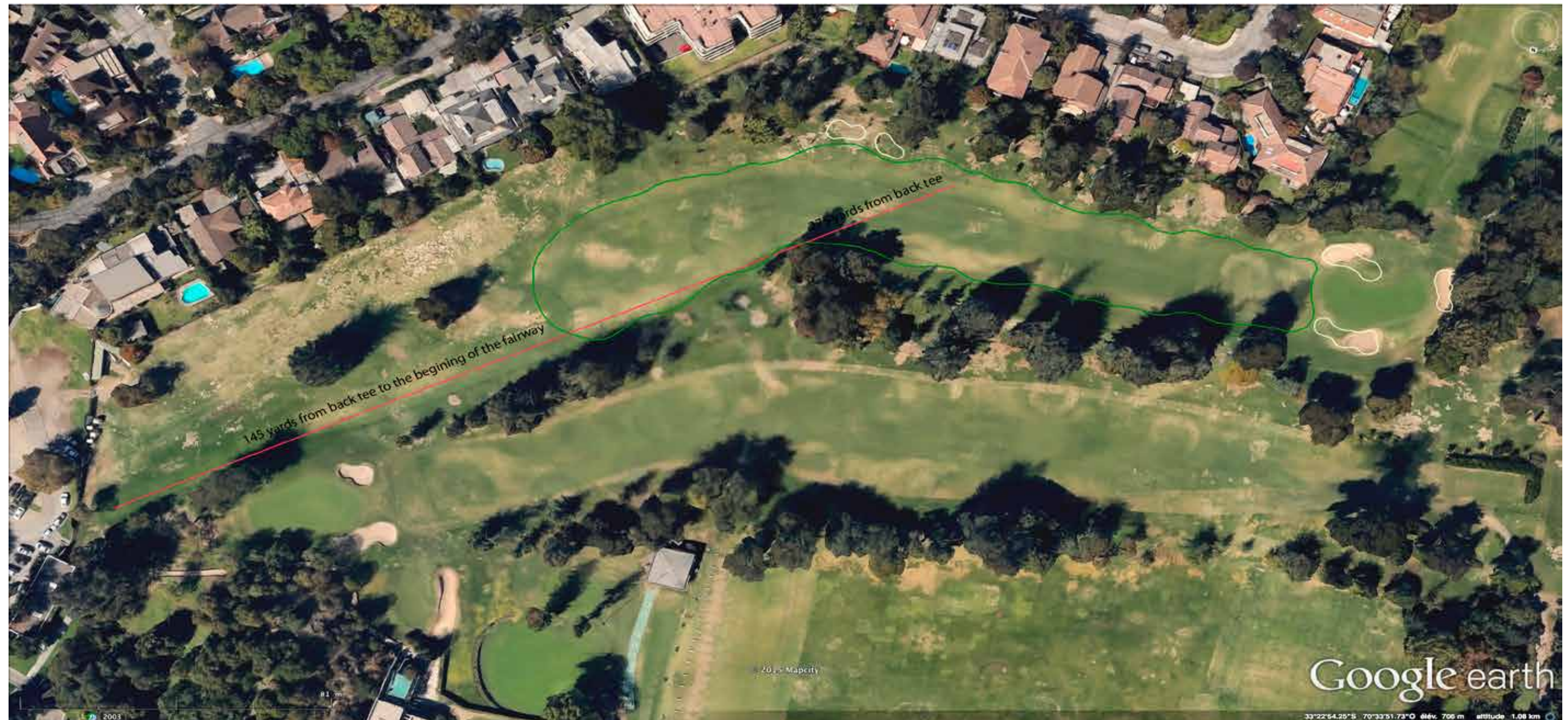
We are proposing to push back the green and enlarge the green to the left, right and the back, using the slope to the left and back to make the edge of the green visible from the landing area and below the green. The front of the green will be sloping very slightly towards the center of the green, and then sloping very slightly at the back and left of the green, to tie in to the existing slope around the green.

EXISTING AERIAL VIEW - HOLE N°3 - PAR 4 - 410/377/364 YARDS - HCP 7



In this aerial view, one can see quite clearly that no particular feature is helping to anchor the dog-leg. Moreover there is a very slight risk of balls being hit into the properties at the dog-leg. As in other holes, the fairway starts just after the tees. The existing left green bunker is turning away from the green. The right and back green bunkers can be seen on this aerial view, but from the landing area are not visible. The green itself is very small and it is quite probable that it was initially bigger but has progressively been encroached by the bermuda grass.

PROPOSED PLAN VIEW - HOLE N°3 - PAR 4 - 410/377/364 YARDS - HCP 7



We are proposing as in other holes to start the fairway 145 yards from the men's tee and to have that area maintained as rough. This will give better visual definition to the fairway and minimize maintenance and irrigation. We are also proposing two new fairway bunkers to anchor the dog-leg and to help avoid balls being hit into the adjacent properties. We are also proposing to enlarge the left green bunker and rotate it closer into the green. The right green bunker has been extended to permit more pin placements and to narrow the entrance to the green. Finally we are proposing to make the existing back bunker visible.

EXISTING VIEW FROM THE TEES - HOLE N°3 - PAR 4 - 410/377/364 YARDS - HCP 7



At present there is no particular strategy off the tee and the good players are hitting over the tree on the corner on the right. Visually off the tee, the hole lacks definition. Moreover there is a slight risk of players hitting long into the adjacent properties.

PROPOSED VIEW FROM THE TEES - HOLE N°3 - PAR 4 - 410/377/364 YARDS - HCP 7



We propose to insert two bunkers into some slight mounding to anchor the dog-leg in the existing rough area helping to give the hole some visual definition and strategic value off the tee. This should also help to mitigate some balls running through into the adjacent properties off the tee shot.

EXISTING VIEW FROM THE LANDING AREA - HOLE N°3 - PAR 4 - 410/377/364 YARDS - HCP 7



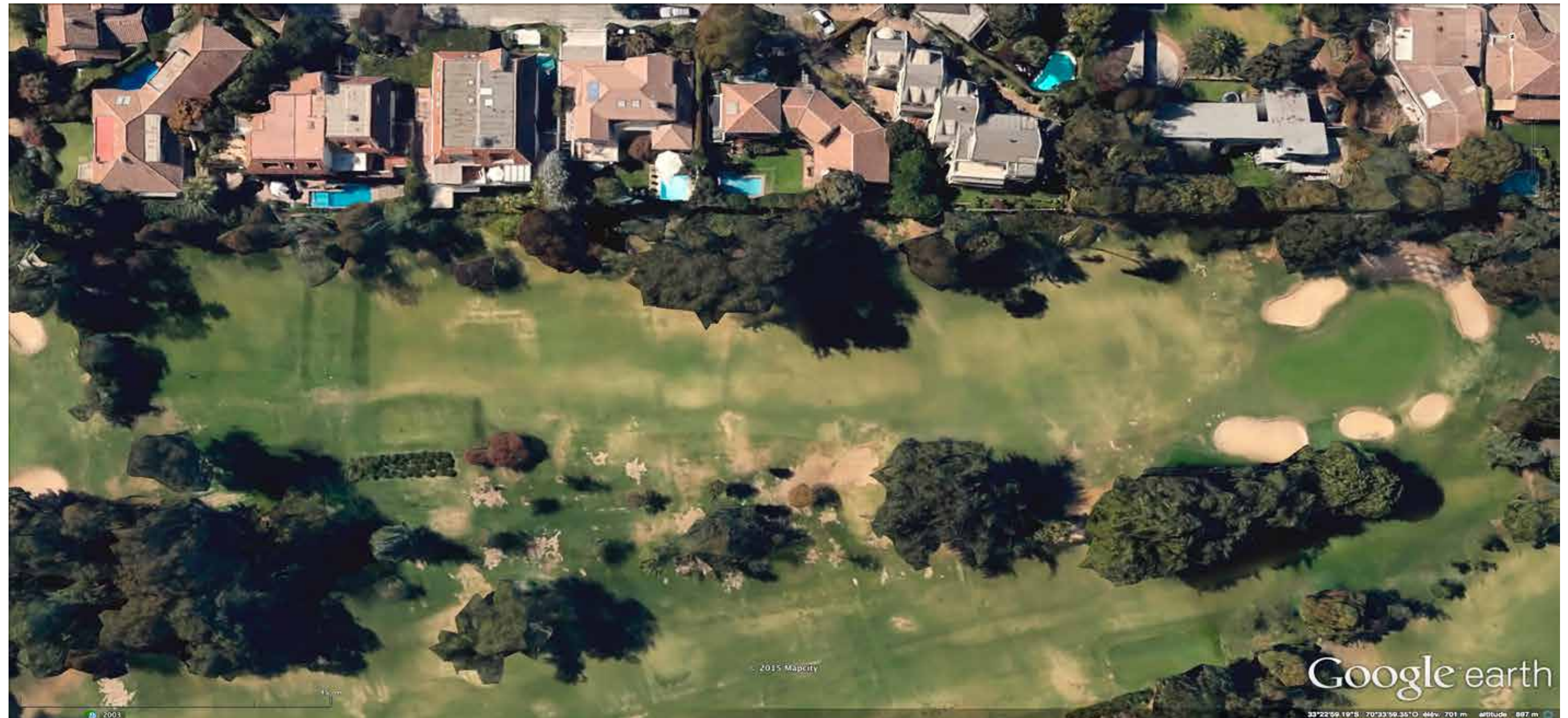
At present from the 150 yard mark one cannot see the green bunker on the right, nor the bunker at the back of the green. The left green bunker is turning away from the green. Due to the hazards being blind the green lacks any form of strategy and doesn't really allow for optional pin placements of various difficulty. The entrance to the green is completely open. The green itself is very small and subject to wear and compaction and it is quite probable that it was initially bigger but has progressively been encroached by the bermuda grass.

PROPOSED VIEW FROM THE LANDING AREA - HOLE N°3 - PAR 4 - 410/377/364 YARDS - HCP 7



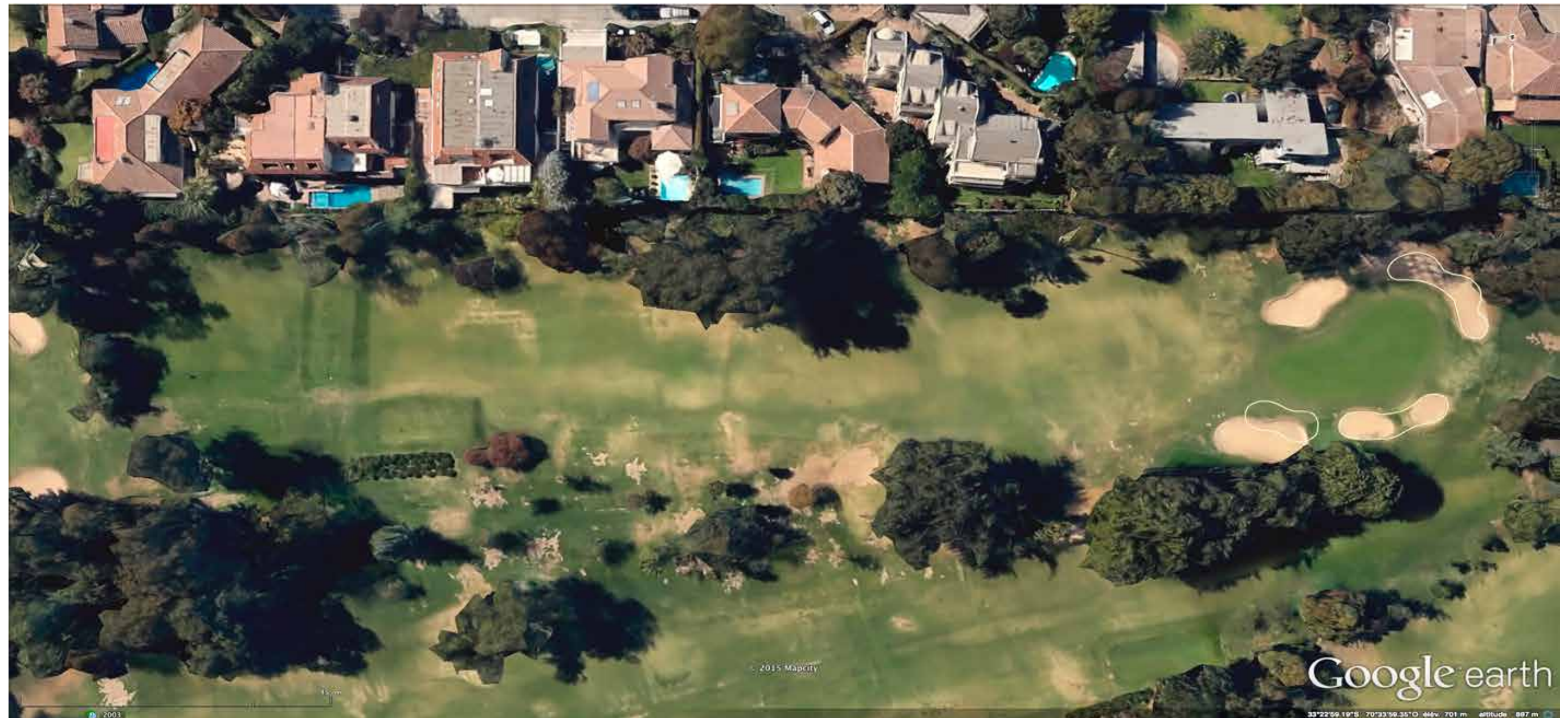
We are proposing to enlarge the left green bunker, make it more visible and rotate it closer into the green. We are proposing to make the existing right green bunker visible and to extend it to permit more pin placements and to narrow the entrance to the green. Finally we are proposing to make the invisible existing back bunker visible. These changes should make the green complex more visually appealing and have more strategic value.

EXISTING AERIAL VIEW - HOLE N°4 - PAR 3 - 187/163/153 YARDS - HCP 15



In this existing aerial view one can see that the bunkers are quite distant from the green edge. The front right green bunker is also partially reducing the access to the next tee. The two right back bunkers are quite small and separate and therefore more difficult to maintain. The back bunker is really quite extensive and has no backdrop, making the green complex look quite flat.

PROPOSED PLAN VIEW - HOLE N°4 - PAR 3 - 187/163/153 YARDS - HCP 15



We are proposing to reduce the front right green bunker, to allow a better passage to the next tee and bringing it closer to the edge of the green. We are also proposing to re-unite the two small bunkers on the right into one, to facilitate maintenance and to help make them more visible. We are also proposing to reduce the size of the back bunker as the left part has no strategic value and to place some mounding in the back to give the green a backdrop and help make this bunker more visible.

EXISTING VIEW FROM THE TEES - HOLE N°4 - PAR 3 - 187/163/153 YARDS - HCP 15



At present the green complex looks relatively flat, especially the bunkers! The front right green bunker is partially blocking the access to the next tee and is quite far from the edge of the green. The two back right green bunkers are quite small. The back green bunker goes far too much to the left and is flat offering no back drop for the green.

PROPOSED VIEW FROM THE TEES - HOLE N°4 - PAR 3 - 187/163/153 YARDS - HCP 15



We are proposing to reduce the size of the front right green bunker to permit a better passage to the next tee and to bring the bunker closer to the edge of the green. We are proposing to re-unite both small bunkers on the right into one, to facilitate their maintenance and to help make it more visible. We are also proposing to remove part of the back bunker on the left and to place some mounding behind the bunker and behind the green to create a visual back drop and to make the back bunker more visible.

EXISTING VIEW FROM THE TEES - HOLE N°5 - PAR 4 - 392/361/337 YARDS - HCP 11



In this existing view, one can see quite clearly that the axis of the tee is pointing into the trees on the left side of the fairway near the landing area, which doesn't help the average player to line up correctly.

PROPOSED VIEW FROM THE TEES - HOLE N°5 - PAR 4 - 392/361/337 YARDS - HCP 11



We are proposing to re-align the axis of the tee down the center line of the fairway, making it much easier for the average player to align himself correctly.

EXISTING VIEW FROM THE LANDING AREA - HOLE N°5 - PAR 4 - 392/361/337 YARDS - HCP 11



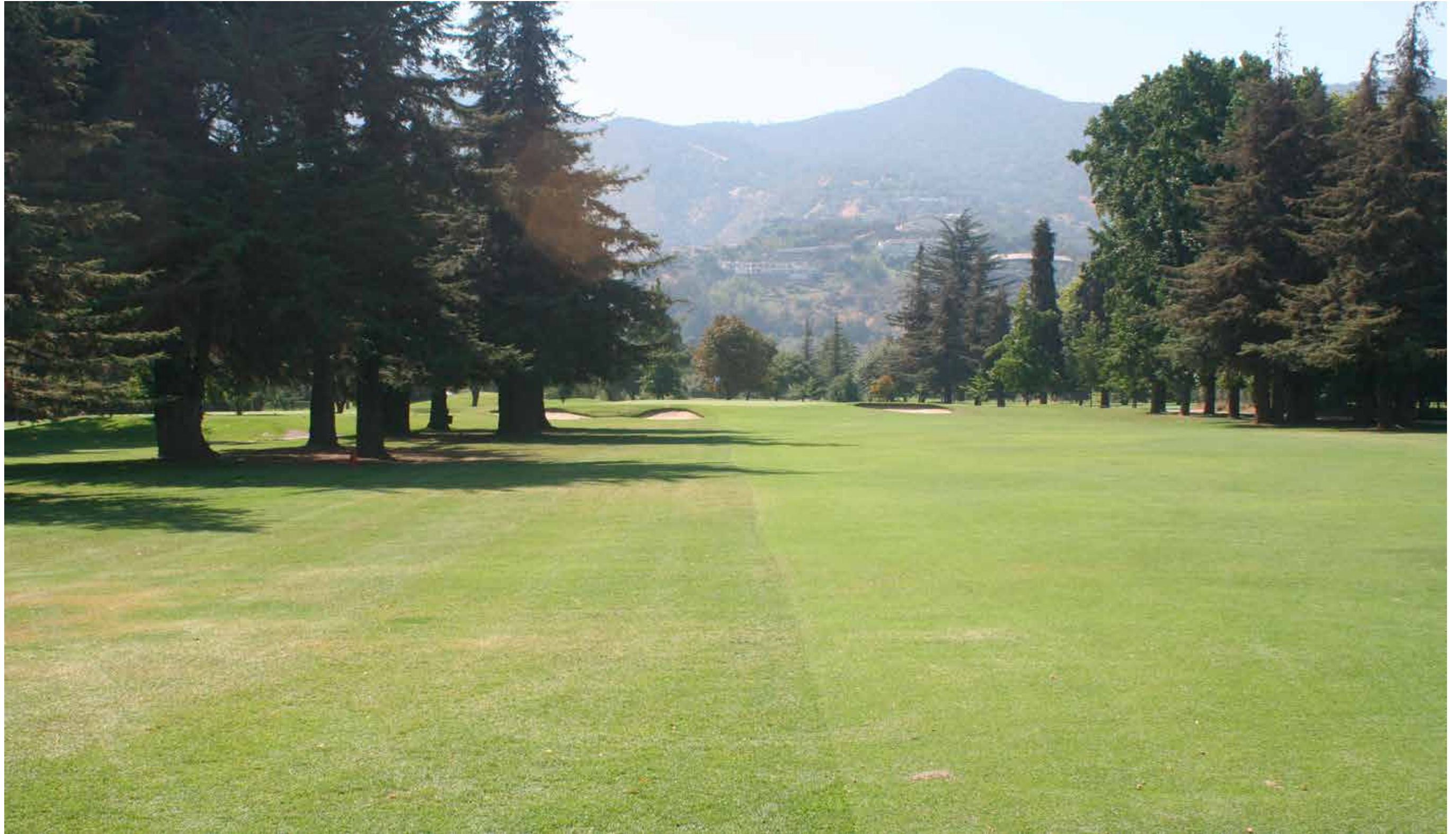
At present the sand line of the left green bunker is a bit low. The back green bunker is not visible, but it is difficult to make visible due to the maintenance path behind the bunker.

PROPOSED VIEW FROM THE LANDING AREA - HOLE N°5 - PAR 4 - 392/361/337 YARDS - HCP 11



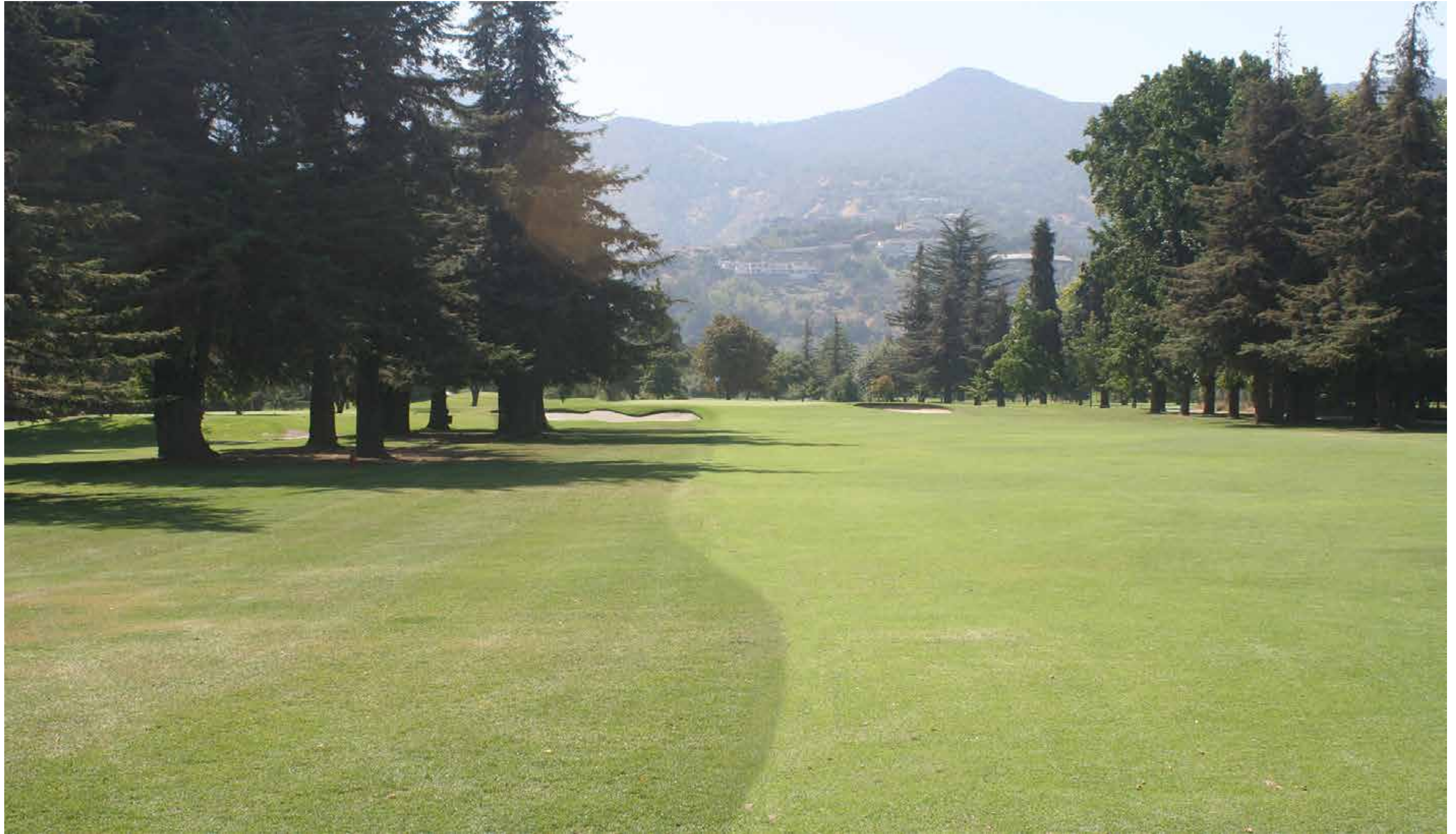
We are proposing to raise the sand line of the left green bunker to make it more visible. We are proposing to leave the back bunker invisible as there is no space behind the bunker permitting to raise it, due to the maintenance road.

EXISTING VIEW OF THE FAIRWAY MOWING LINE - HOLE N°5



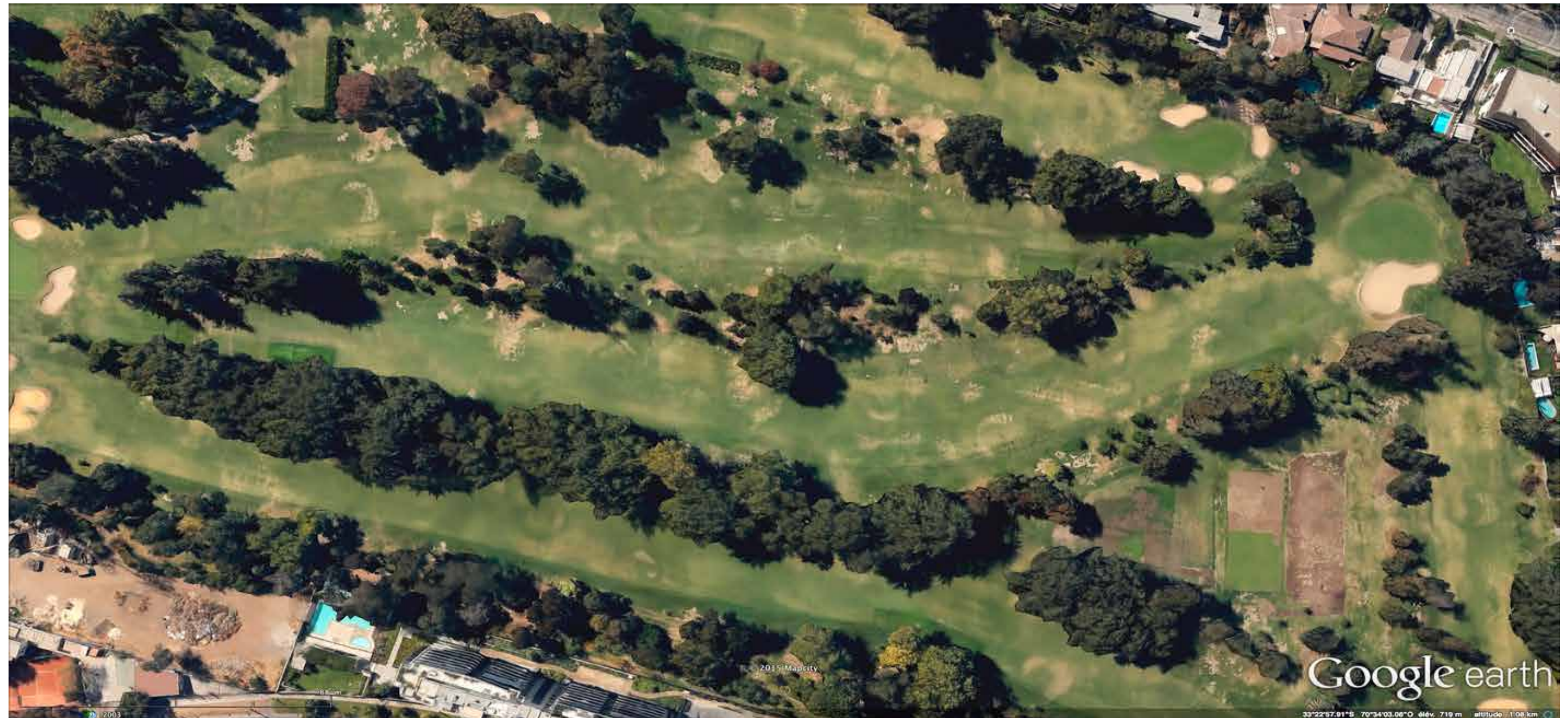
This view has been selected to show how the fairways are being mowed at present. In most cases on the golf course, the fairway is being cut straight creating no movement on the fairway, and not adapting to the bordering vegetation and subsequent shade. The mowing line of the fairway is a design feature and is an integral part of the visual presentation of the hole.

PROPOSED VIEW OF THE FAIRWAY MOWING LINE - HOLE N°5



We are proposing that the cutting line of the fairways be reviewed, so that there is more movement and that in some instances they adapt to the existing vegetation and subsequent shade. The visual presentation of the fairway is an integral part of the presentation of the hole and is a design feature in itself. Having movement on the fairway and adapted cutting heights for the roughs would help to define the fairway off the tee.

EXISTING AERIAL VIEW - HOLE N°6 - PAR 4 - 419/401/355 YARDS - HCP 1



On this existing aerial view one can see as on other holes that the fairway starts just after the tees. Similarly this hole has no fairway bunkers, reducing the strategy off the tee. The existing green bunker is very large, relatively flat and is partially blocking the access to the next hole.

PROPOSED PLAN VIEW - HOLE N°6 - PAR 4 - 419/401/355 YARDS - HCP 1



As on the other holes we are proposing that the fairway starts at 145 yards from the men's tee, to reduce maintenance and irrigation and has some movement to adapt to vegetation and its subsequent shade. We are also proposing to place two new fairway bunkers in the rough on the right between a distance of 285 yards and 315 yards. These bunkers will only concern the very low handicap players but will bring increased strategic challenge off the tee. We are proposing to reduce the size of the existing right green bunker to facilitate the passage to the next tee. We are proposing to place new bunkers to the left and back of the green to create some strategic challenge on the green by permitting pin positions of various difficulty. The proposed raised bunker at the back of the green will also create a back drop to the green.

EXISTING VIEW FROM THE TEES - HOLE N°6 - PAR 4 - 419/401/355 YARDS - HCP 1



At present there is no particular strategy off the tee and the good players are hitting over the tree on the corner on the left. Visually off the tee, the hole lacks definition.

PROPOSED VIEW FROM THE TEES - HOLE N°6 - PAR 4 - 419/401/355 YARDS - HCP 1



We propose to insert two new bunkers in the rough on the right side into some slight mounding, between a distance of 285 yards and 315 yards off the back tee. This should help to give the hole some visual definition and strategic value off the tee and will only concern the very low handicap players.

EXISTING VIEW FROM THE LANDING AREA - HOLE N°6 - PAR 4 - 419/401/355 YARDS - HCP 1



At present from the landing area, the right green bunker is quite flat, very large and partially blocking the access to the next tee. The green lacks any form of strategy and doesn't really allow for optional pin placements of various difficulty. The entrance to the green is completely open and the green itself has no visual backdrop.

PROPOSED VIEW FROM THE LANDING AREA - HOLE N°6 - PAR 4 - 419/401/355 YARDS - HCP 1



We are proposing to reduce the size of the existing green bunker on the right, to allow a better passage to the next tee. We are proposing to create a new bunker on the left side of the green that also extends towards the entrance of the green. We are also proposing to position a new bunker at the back of the green with some mounding to give the green a visual backdrop. These changes should make the green complex more visually appealing, narrow the entrance to the green, permit more varied pin positions and give the green more strategic value.

EXISTING VIEW FROM THE TEES - HOLE N°7 - PAR 3 - 164/151/143 YARDS - HCP 17



At present the green complex looks relatively flat. The front bunker is barely visible from the tee, having limited strategic value. There is no visual back drop to the green. Branches of the the large tree to the left are also impacting the tee shot.

PROPOSED VIEW FROM THE TEES - HOLE N°7 - PAR 3 - 164/151/143 YARDS - HCP 17



We are proposing to raise the sand line of the existing frontal bunker to make it more visible and therefore giving the bunker more strategic value. We are also proposing to raise the back of the green, both to create some visual movement on the green and to give the green a visual back drop. We are also proposing to cut back some of the branches on the big tree to the left that are obstructing play.

EXISTING VIEW FROM THE LEFT OF THE TEES - HOLE N°7



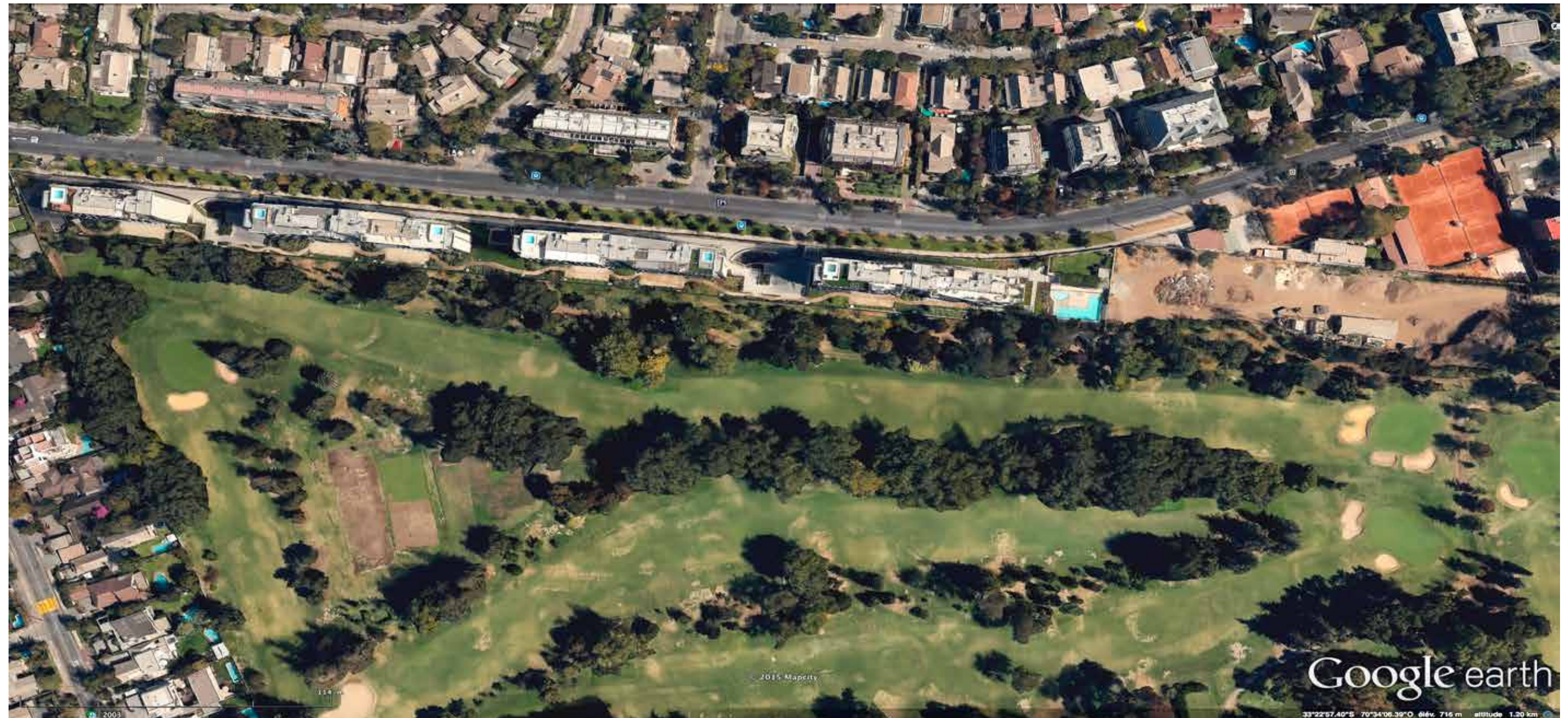
At present this hole has a very generous tee, that is suitable and preferable on a short Par 3. But unfortunately the whole left side isn't being used at present due to the obstructing branches on the large tree to the left of the fairway.

PROPOSED VIEW FROM THE LEFT OF THE TEES - HOLE N°7



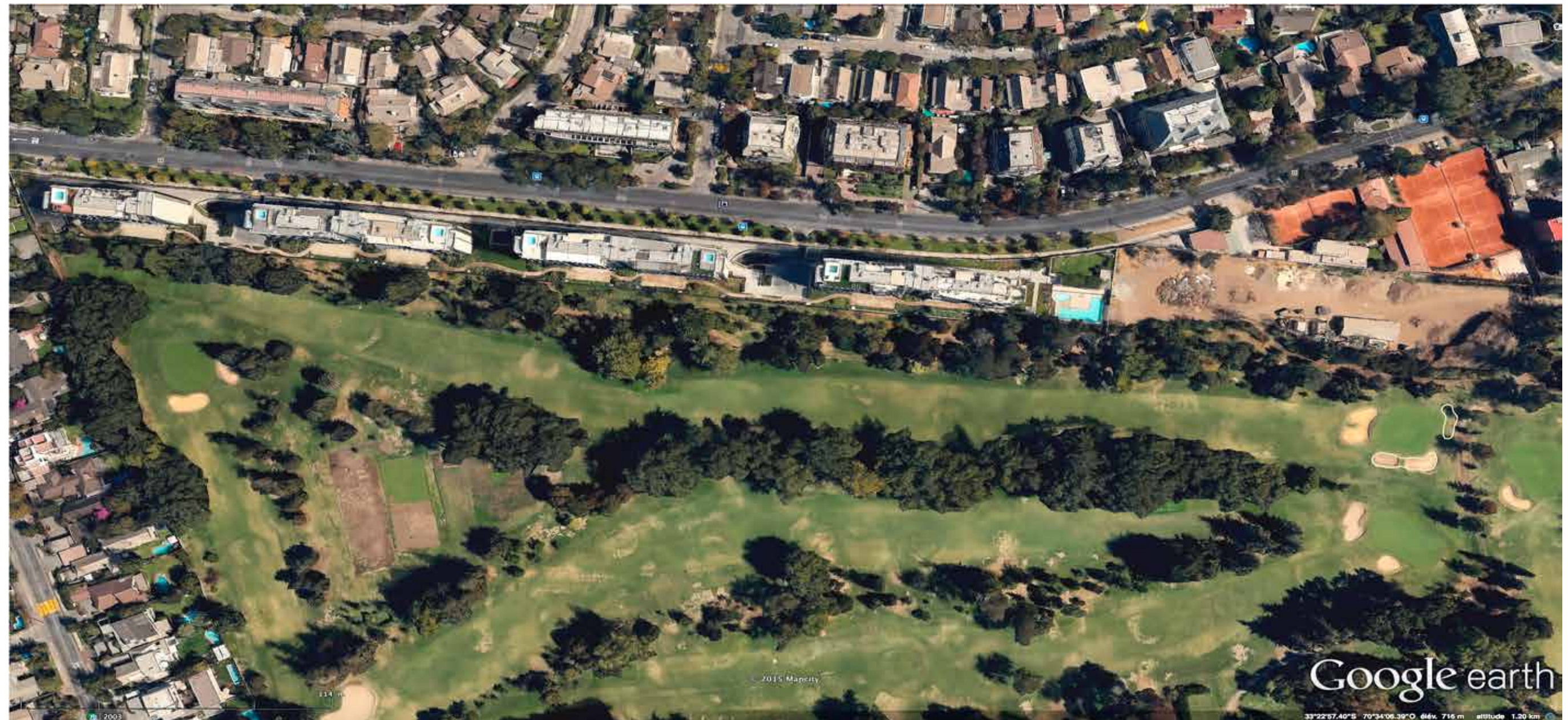
We are proposing to remove several of the obstructing branches on the large tree to the left of the fairway, to render the green more playable from the left side of the tee.

EXISTING AERIAL VIEW - HOLE N°8 - PAR 5 - 550/505/440 YARDS - HCP 9



On this existing aerial view one can see as on other holes that the fairway starts just after the tees. Similarly this hole has no fairway bunkers, but the hole is rendered very difficult, by having a very narrow fairway bordered by mature trees on both sides. In some cases the branches of tree are obstructing play on the fairway. From the second landing area the existing green bunkers are barely visible, offering no strategic value to the green complex. Moreover the green has no back drop making it quite difficult to see where the green ends.

PROPOSED PLAN VIEW - HOLE N°8 - PAR 5 - 550/505/440 YARDS - HCP 9



As on the other holes we are proposing that the fairway starts at 145 yards from the men's tee, to reduce maintenance and irrigation and has some movement to adapt to vegetation and its subsequent shade. We are also proposing that some branches of trees obstructing play from the fairway be removed. We are also proposing to raise the sand line of the existing frontal green bunker to make it more visible and to give it more strategic value. We are also proposing to re-unite the two lateral green bunkers to simplify maintenance as well as making them more visible to enhance their strategic value. The proposed new raised bunker at the back of the green will also create a back drop to the green, making the perimeter of the green complex more visible.

EXISTING VIEW FROM THE LADIES TEE - HOLE N°8 - PAR 5 - 550/505/440 YARDS - HCP 9



At present the tee shot from the ladies tee is partially obstructed by branches from the trees on the right of the fairway, pushing players to aim towards the large tree to the left of the fairway.

PROPOSED VIEW FROM THE LADIES TEE - HOLE N°8 - PAR 5 - 550/505/440 YARDS - HCP 9



We are proposing to remove several of the obstructing branches to the right of the fairway, to render the tee shot more playable from the ladies tee.

EXISTING VIEW FROM THE 2ND LANDING AREA - HOLE N°8 - PAR 5 - 550/505/440 YARDS - HCP 9



At present, from the second landing area the existing green bunkers are barely visible, offering no strategic value to the green complex. Moreover the green has no back drop making it quite difficult to see where the green ends. Some branches from the trees on the right are also obstructing play to the green from the right edge of the fairway.

PROPOSED VIEW FROM THE 2ND LANDING AREA - HOLE N°8 - PAR 5 - 550/505/440 YARDS - HCP 9



We are proposing that some branches of trees obstructing play from the fairway on the right be removed. We are also proposing to raise the sand line of the existing frontal green bunker to make it more visible and to give it more strategic value. We are also proposing to re-unite the two lateral green bunkers to simplify maintenance as well as making them more visible to enhance their strategic value. The proposed new raised bunker at the back of the green will also create a back drop to the green, making the perimeter of the green complex more visible.

EXISTING VIEW FROM THE 2ND LANDING AREA - HOLE N°9 - PAR 5 - 524/501/439 YARDS - HCP 5



At present from the second landing area, the existing green bunker on the left is not visible, and the existing green bunker on the right is visible but lacks definition and movement to play any strategic role. Moreover, the green has no back drop making it difficult to see where the green ends on this uphill shot.

PROPOSED VIEW FROM THE 2ND LANDING AREA - HOLE N°9 - PAR 5 - 524/501/439 YARDS - HCP 5



We are proposing to make the left green bunker visible, to give it some strategic value. We are also proposing to raise the sand line to make the right green bunker more prominent and visible and to give it some movement. We are also proposing to place some gentle mounding at the back of the green to give a better definition to the green complex and to give it a back drop on this uphill shot.

EXISTING AERIAL VIEW - HOLE N°10 - PAR 4 - 391/367/334 YARDS - HCP 12



On this existing aerial view one can see as on other holes that the fairway starts just after the tees. Similarly this hole has no fairway bunkers. From the existing men's tee, some players are hitting over the trees on the left. The entrance to the green is completely open and the position of the green bunkers are lateral, and doesn't really allow for optional pin placements of various difficulty. Moreover a green bunker on the right is under a tree, making for a double hazard, partially blocking access to the next tee.

PROPOSED PLAN VIEW - HOLE N°10 - PAR 4 - 391/367/334 YARDS - HCP 12



As on the other holes we are proposing that the fairway starts at 145 yards from the men's tee, to reduce maintenance and irrigation and has some movement to adapt to vegetation and its subsequent shade. We are also proposing that an optional men's tee, be built to the left of the existing one and removing an existing tree in the line of play, off that proposed tee. This should avoid players hitting over the trees on the left to shorten the dog-leg. We are also proposing to place two new fairway bunkers in the rough on the right between a distance of 285 yards and 315 yards. These bunkers will only concern the very low handicap players but will bring increased strategic challenge off the tee and will help to visually anchor the dog-leg. We are also proposing to remove the right green bunker under the tree as it's a double hazard, hard to maintain and partially blocks access to the next tee. We are also proposing to extend the existing front green bunker to close up a little the entrance to the green. This should allow for more optional pin placements. We are also proposing to place some gentle mounding behind the bunker at the back of the green, to give the green a back drop.

EXISTING VIEW FROM THE TEES - HOLE N°10 - PAR 4 - 391/367/334 YARDS - HCP 12



At present there is no particular strategy off the tee and the good players are hitting over the trees on the corner on the left. Visually off the tee, the hole lacks definition.

PROPOSED VIEW FROM THE TEES - HOLE N°10 - PAR 4 - 391/367/334 YARDS - HCP 12



We propose to insert two new bunkers in the rough on the right side into some slight mounding, between a distance of 285 yards and 315 yards off the back tee. This should help to give the hole some visual definition, anchor the dog-leg and add strategic value off the tee and will only concern the very low handicap players.

EXISTING VIEW FROM THE LANDING AREA - HOLE N°10 - PAR 4 - 391/367/334 YARDS - HCP 12



At present, from the landing area the green looks relatively flat. The existing bunkers look flat, with little strategic value and giving no movement to the green complex. The entrance to the green is quite open, affording few strategic pin positions. There is also a green bunker on the right under a tree, making for a double hazard, partially blocking access to the next tee.

PROPOSED VIEW FROM THE LANDING AREA - HOLE N°10 - PAR 4 - 391/367/334 YARDS - HCP 12



We are proposing to extend the existing front green bunker to close up a little the entrance to the green and to raise the sand line a little, to make it more visible. This should allow for more optional pin placements. We are also proposing to place some gentle mounding behind the bunker at the back of the green, to give the green a back drop. We are also proposing to remove the green bunker under a tree on the right, which is acting as a double hazard and is partially blocking the access to the next tee.

EXISTING VIEW FROM THE TEES - HOLE N°11 - PAR 3 - 177/165/154 YARDS - HCP 18



At present both green bunkers on the right are barely visible, having as such, limited strategic value. The frontal green bunker is visible but lacks definition. Lastly some branches of the tree to the right are also impacting the visibility of the green complex.

PROPOSED VIEW FROM THE TEES - HOLE N°11 - PAR 3 - 177/165/154 YARDS - HCP 18



We are proposing to raise the sand line of the existing frontal bunker to make it more visible and therefore giving the bunker more strategic value. We are also proposing to make the two right green bunkers much more visible by raising the sand line. Lastly we are also proposing to cut back some of the branches on the big tree to the right that are impacting the visibility of the green complex.

EXISTING VIEW OF THE GREEN - HOLE N°13 - PAR 5 - 602/570/482 YARDS - HCP 8



At present on this uphill shot, most of the features of the green complex are difficult to read and barely visible. The fairway bunker in the second landing area, as well as the green bunkers to the left, need to be much more visible and prominent. The green bunker to the right looks very flat and quite far from the green, with as such, little strategic value. It could also be argued that this hole would be enhanced by some mounding at the back of the green, to give the green a back drop on this uphill shot.

PROPOSED VIEW OF THE GREEN - HOLE N°13 - PAR 5 - 602/570/482 YARDS - HCP 8



We are proposing on this uphill shot, to make all the features of the green complex much more visible, so that they can play a role strategically. We propose to raise the lip and sand line of the left fairway bunker, to make it more visible, but also to make the bunker shot more challenging and influence low handicap players on their attack of the green. We are also proposing to raise the lip and sand line of the left green bunkers, so that they are visible and play a much more prominent role strategically and in the presentation of the green complex. We are also proposing to raise the sand line of the right green bunker to give the bunker some movement, make it more visible and to appear closer to the green. It is not shown in this montage, but the green complex would be enhanced by creating some back drop with some subtle mounding behind the green.

EXISTING AERIAL VIEW - HOLE N°14 - PAR 4 - 344/314/291 YARDS - HCP 14



At present the green itself is quite small and has a prominent swale in the middle of the green making for a limited number of pin placements. Moreover, an important number of members consider that the swale is very unforgiving and in some cases makes putting from one plateau to the next nearly impossible. Any pin placed at the base of the swale makes for a near impossible putt. The front of the green is quite open. The front right bunker has been placed as a fairway bunker to catch balls from players hitting over the trees on this short Par 4 dog-leg, but is also hindering the bogey player. The back bunker to the right is barely visible, and as such is not playing much of a strategic role.

PROPOSED PLAN VIEW - HOLE N°14 - PAR 4 - 344/314/291 YARDS - HCP 14



We are proposing to remodel the existing green by taking away the swale in the middle of the green and enlarging the surface of the green at the back. This will result in a much bigger putting surface with very small undulations and allowing for significantly more pin placements. We are also proposing to remove the fairway bunker on the right near the green as it also hindering the bogey player who lays up to the green. We are also proposing to extend the frontal right green bunker to close up a little the entrance to the green and to permit more strategic pin placements. We are also proposing to move back, the back right green bunker and make it visible, to enhance the strategy on the enlarged part of the green.

EXISTING VIEW OF THE GREEN - HOLE N°14 - PAR 4 - 344/314/291 YARDS - HCP 14



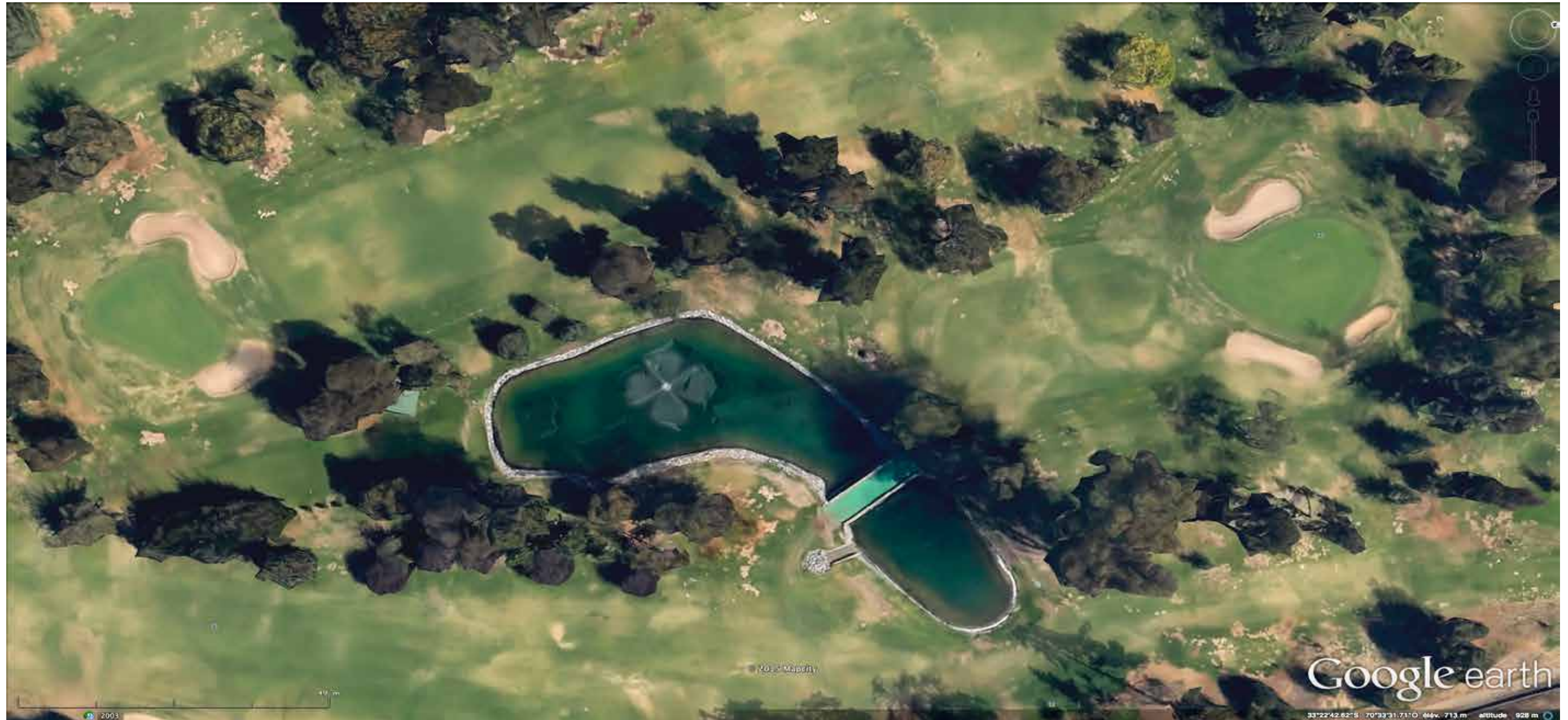
At present the green itself is quite small and has a prominent swale in the middle of the green making for a limited number of pin placements. Moreover, an important number of members consider that the swale is very unforgiving and in some cases makes putting from one plateau to the next nearly impossible. Any pin placed at the base of the swale makes for a near impossible putt. The front of the green is quite open. The front right bunker has been placed as a fairway bunker to catch balls from players hitting over the trees on this short Par 4 dog-leg, but is also hindering the bogey player. The back bunker to the right is barely visible, and as such is not playing much of a strategic role.

PROPOSED VIEW OF THE GREEN - HOLE N°14 - PAR 4 - 344/314/291 YARDS - HCP 14



We are proposing to remodel the existing green by taking away the swale in the middle of the green and enlarging the surface of the green at the back. This will result in a much bigger putting surface with very small undulations and allowing for significantly more pin placements. We are also proposing to remove the fairway bunker on the right near the green as it also hindering the bogey player who lays up to the green. We are also proposing to extend the frontal right green bunker to close up a little the entrance to the green and to permit more strategic pin placements. We are also proposing to move back, the back right green bunker and make it visible, to enhance the strategy on the enlarged part of the green.

EXISTING AERIAL VIEW - HOLE N°16 - PAR 3 - 197/173/161 YARDS - HCP 16



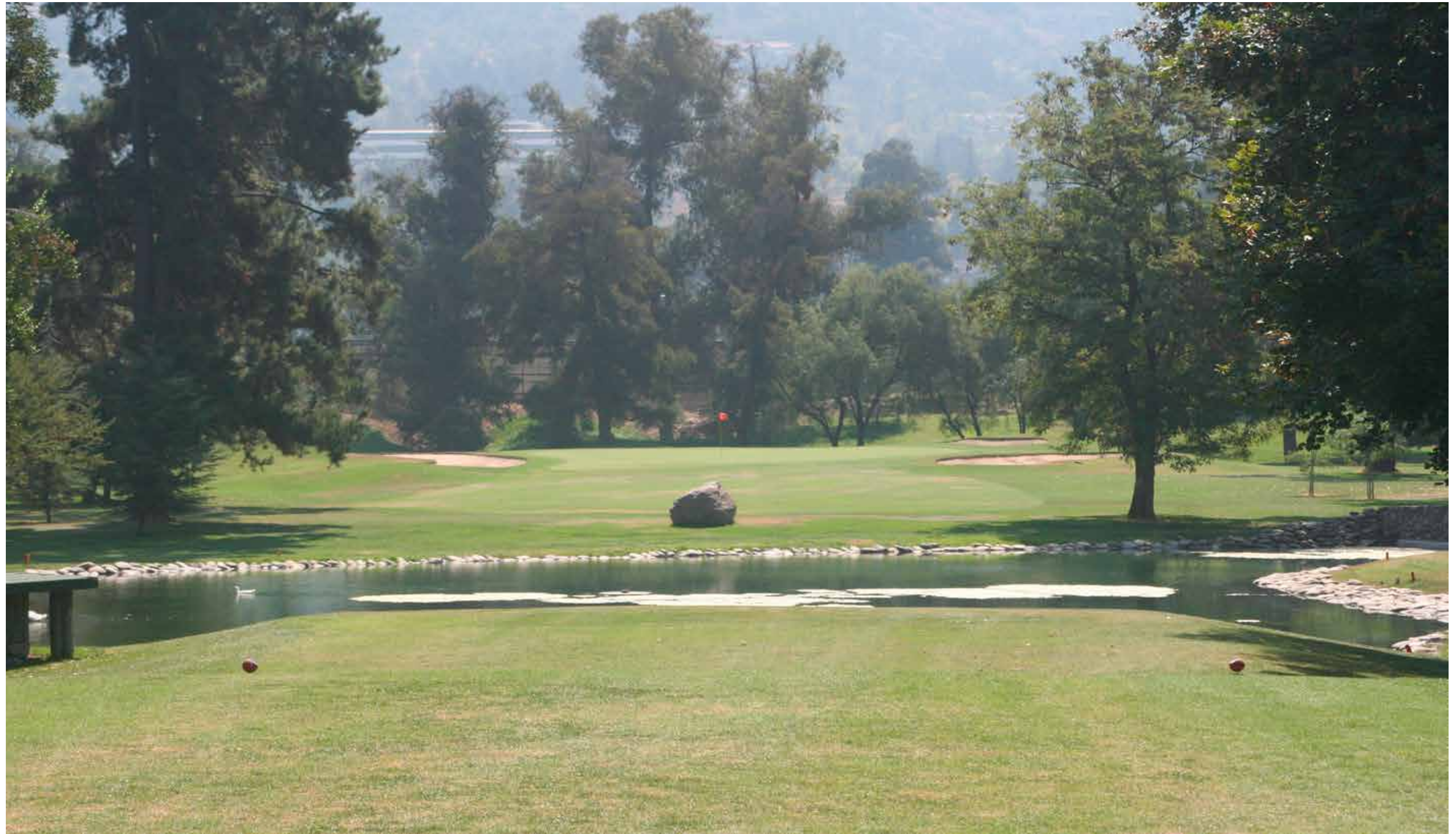
On this aerial view one can see that the entrance of the green is quite open and the lateral bunkers appear quite flat, affording no strategy off the tee. There are no pin placements of various difficulty.

PROPOSED PLAN VIEW - HOLE N°16 - PAR 3 - 197/173/161 YARDS - HCP 16



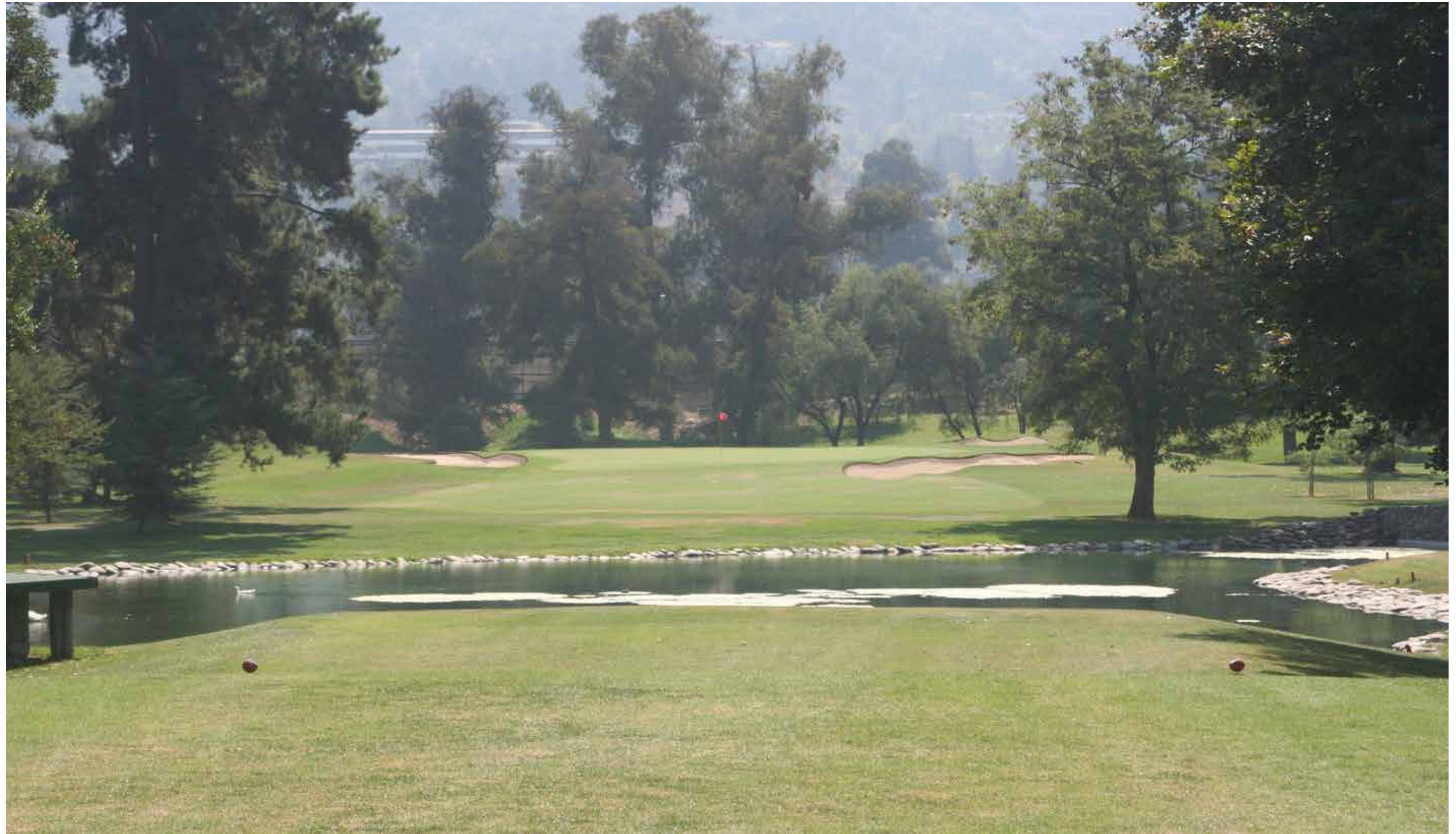
We are proposing to extend the existing frontal green bunker to close up a little, the entrance to the green. This should allow for more strategic pin placements. The topography of this green complex makes it very difficult to place any mounding at the back of the green to give it a back drop and to significantly raise the back right green bunker. Nevertheless we are proposing to raise the sand lines of the green bunkers to make them more visible.

EXISTING VIEW OF THE GREEN - HOLE N°16 - PAR 3 - 197/173/161 YARDS - HCP 16



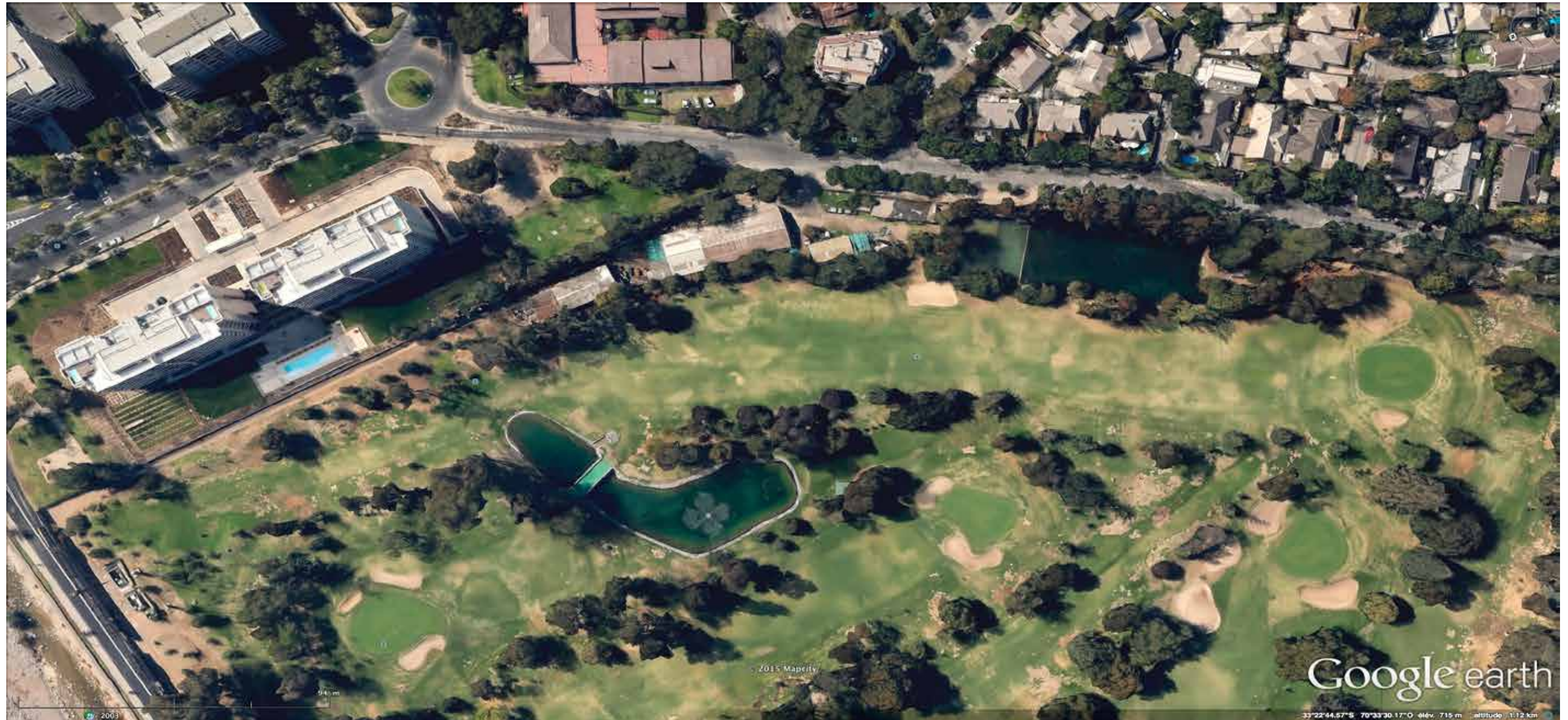
At present the entrance of the green is quite open and the lateral bunkers appear quite flat, affording no strategy off the tee. There are no pin placements of various difficulty. Lastly some branches of the tree to the right are also impacting the visibility of the green complex.

PROPOSED VIEW OF THE GREEN - HOLE N°16 - PAR 3 - 197/173/161 YARDS - HCP 16



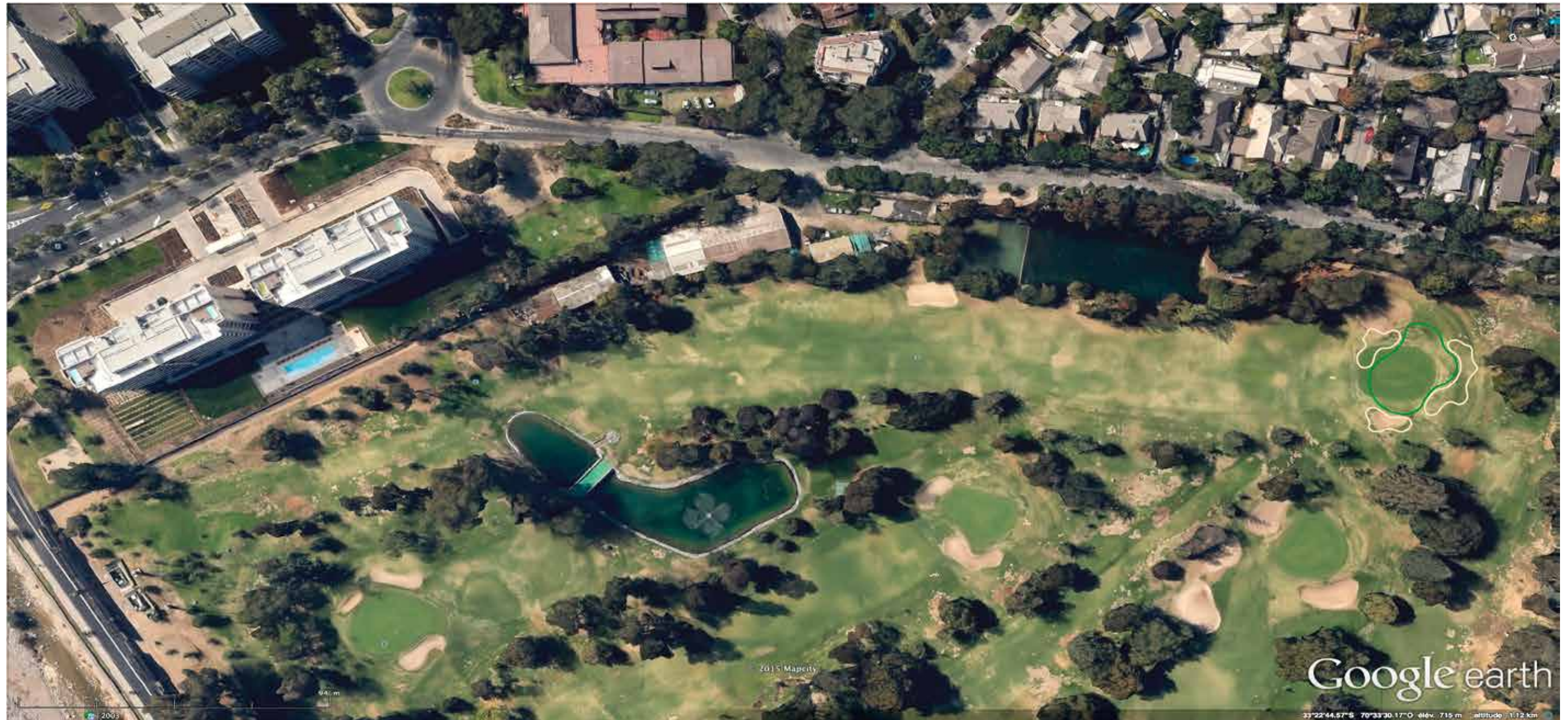
We are proposing to extend the existing frontal green bunker to close up a little, the entrance to the green. This should allow for more strategic pin placements on the right. The topography of this green complex makes it very difficult to place any mounding at the back of the green to give it a back drop and to significantly raise the back right green bunker. Nevertheless we are proposing to raise the sand lines of the green bunkers to make them more visible.

EXISTING AERIAL VIEW - HOLE N°17 - PAR 4 - 420/381/338 YARDS - HCP 10



At present there is a back tee, which is only being used for championship play, as there is a risk of balls being hooked into the adjacent apartment building. At present this back tee is 60 yards back from the back tee for medal play. As such the existing left fairway bunker is in play off the championship tee but not off the medal tee. The green complex is pretty mundane having no character. The two green bunkers are quite far from the green and there is a very unsightly mound to the left of the green. Moreover the green bunkers being lateral to the green and quite far, there are no pin placements of various difficulty. The green also lacks a back drop.

PROPOSED PLAN VIEW - HOLE N°17 - PAR 4 - 420/381/338 YARDS - HCP 10



We are proposing to see how the new green impacts play and scoring before modifying the placement of the existing left fairway bunker. Concerning the green complex, we are proposing a significant remodelling. We are proposing to enlarge the green and to remove the unsightly mound to the left of the green. We are proposing to remove the existing left green bunker and to place a new left frontal bunker to close up the entrance to the green. We are also proposing to place some mounding at the back of the green to give it a back drop in which we propose to insert a new green bunker. We are also proposing to modify the existing right green bunker. This new green complex should be much more visually appealing and afford many more varied pin placements.

EXISTING VIEW OF THE GREEN - HOLE N°17 - PAR 4 - 420/381/338 YARDS - HCP 10



At present the green complex is pretty mundane having no character. The two green bunkers are quite far from the green and there is a very unsightly mound to the left of the green. Moreover the green bunkers being lateral to the green and quite far, there are no pin placements of various difficulty. The green also lacks a back drop.

PROPOSED VIEW OF THE GREEN - HOLE N°17 - PAR 4 - 420/381/338 YARDS - HCP 10



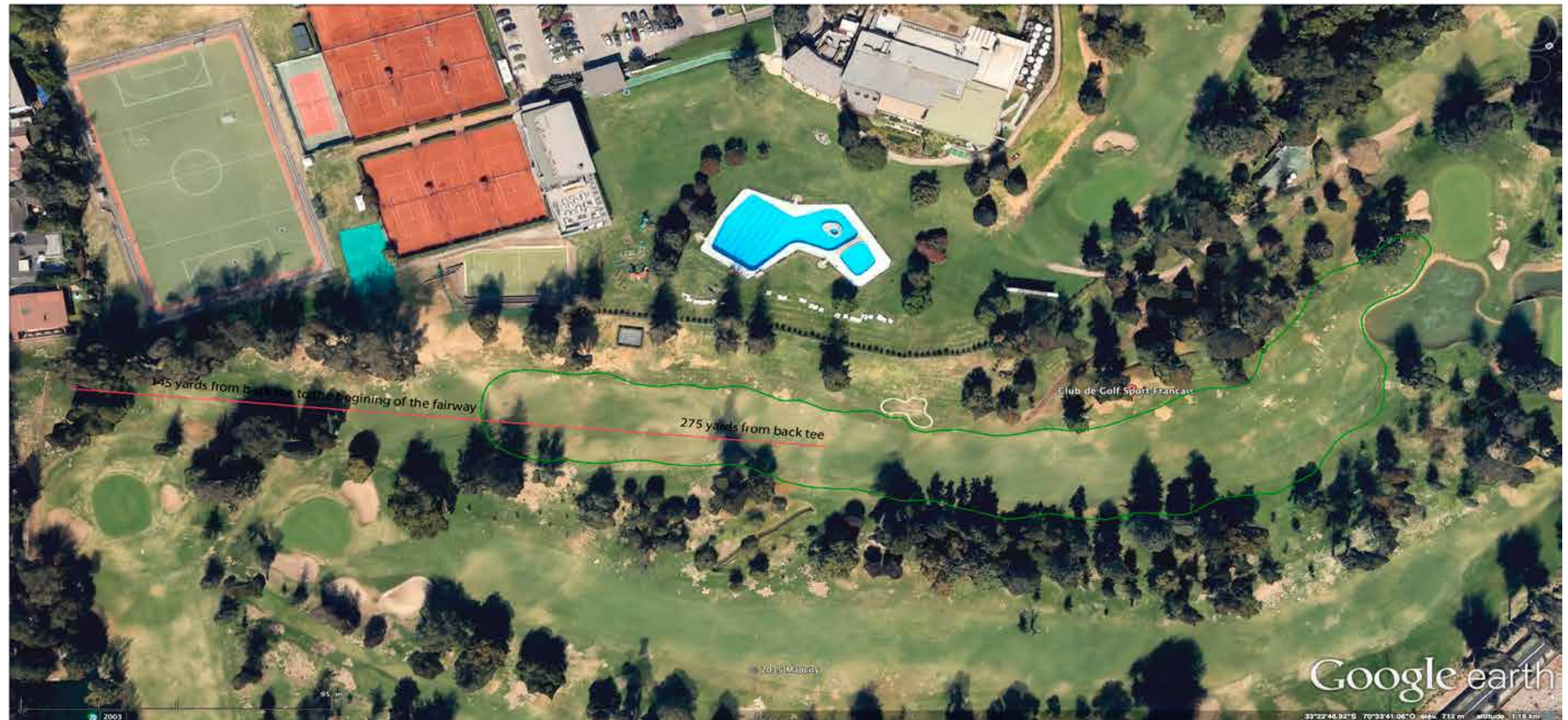
Concerning the green complex, we are proposing a significant remodelling. We are proposing to enlarge the green and to remove the unsightly mound to the left of the green. We are proposing to remove the existing left green bunker and to place a new left frontal bunker to close up the entrance to the green. We are also proposing to place some mounding at the back of the green to give it a back drop in which we propose to insert a new green bunker. We are also proposing to modify the existing right green bunker making it much more visible and closer to the green. This new green complex should be much more visually appealing, strategic and afford many more varied pin placements.

EXISTING AERIAL VIEW - HOLE N°18 - PAR 5 - 572/531/507 YARDS - HCP 6



On this existing aerial view one can see as on other holes that the fairway starts just after the tees. Similarly this hole has no fairway bunkers. One can also see that there is no lay up area for the bogey player in front of the green, his only real option being in front of the water.

PROPOSED PLAN VIEW - HOLE N°18 - PAR 5 - 572/531/507 YARDS - HCP 6



As on the other holes we are proposing that the fairway starts at 145 yards from the men's tee, to reduce maintenance and irrigation and has some movement to adapt to vegetation and its subsequent shade. We propose to insert a new fairway bunker in the rough on the left side, between a distance of 285 yards and 315 yards off the back tee, that will only concern the very low handicap players. This should help to give the hole some visual definition off the tee and help the players to align themselves away from the swimming pool area. We are also proposing that the fairway be enlarged to the left near the entrance to the green. This enlarged area should allow a bogey player to lay up here, rather than behind the lake.

EXISTING VIEW FROM THE TEES - HOLE N°18 - PAR 5 - 572/531/507 YARDS - HCP 6



At present off the tee the hole lacks any definition . On the right the branches of the tree are hindering play.

PROPOSED VIEW FROM THE TEES - HOLE N°18 - PAR 5 - 572/531/507 YARDS - HCP 6



We are proposing to insert a new fairway bunker in the rough on the left side, between a distance of 285 yards and 315 yards off the back tee, that will only concern the very low handicap players. This should help to give the hole some visual definition off the tee and help the players to align themselves away from the swimming pool area. We are also proposing to cut back some of the branches on the trees to the right that are impacting play and visibility of the fairway.

EXISTING VIEW FROM THE 2ND LANDING AREA - HOLE N°18 - PAR 5 - 572/531/507 YARDS - HCP 6



At present one can see that there is no lay up area for the bogey player in front of the green, his only real option being in front of the water. The right green bunker is invisible.

PROPOSED VIEW FROM THE 2ND LANDING AREA - HOLE N°18 - PAR 5 - 572/531/507 YARDS - HCP 6



We are also proposing that the fairway be enlarged to the left near the entrance to the green. This enlarged area should allow a bogey player to lay up here, rather than behind the lake. We are also proposing to remodel the existing right green bunker to make it visible.

EXISTING AERIAL VIEW - PRACTICE AREA



One can see from this aerial view, that at present from the existing teeing area on the practice, the vast majority of players cannot practice with woods and for a very very small minority long irons.

PROPOSED PLAN VIEW - PRACTICE AREA



We are proposing that a new teeing area be built behind the existing practice putting area to practice with woods. This new tee could only be used during certain specific times, for obvious security and safety matters. We have also been looking at an alternative proposal that we shall present at a later date, that proposes to move the existing “quincho” and to build a new practice putting green in front of the caddy master building. This would then allow the golf club to have a practice range sufficiently long to practice with woods all the time.

EXISTING VIEW AT THE BACK OF THE PRACTICE AREA



At present this is how the proposed area for a new back tee to practice with woods at certain times looks like and is situated.

PROPOSED VIEW AT THE BACK OF THE PRACTICE AREA



We are proposing that a new teeing area be built behind the existing practice putting area to practice with woods. This new tee could only be used during certain specific times, for obvious security and safety matters.